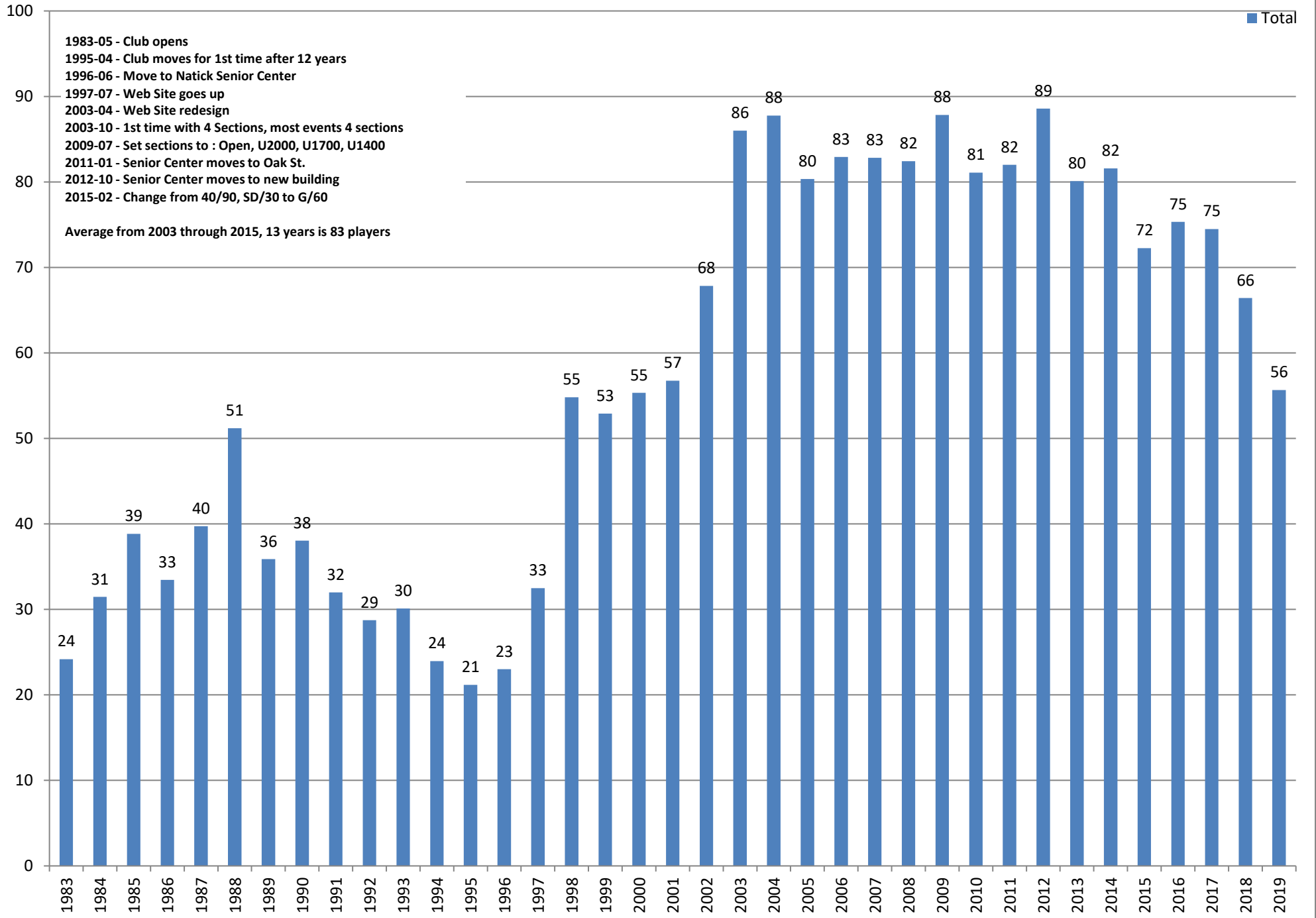


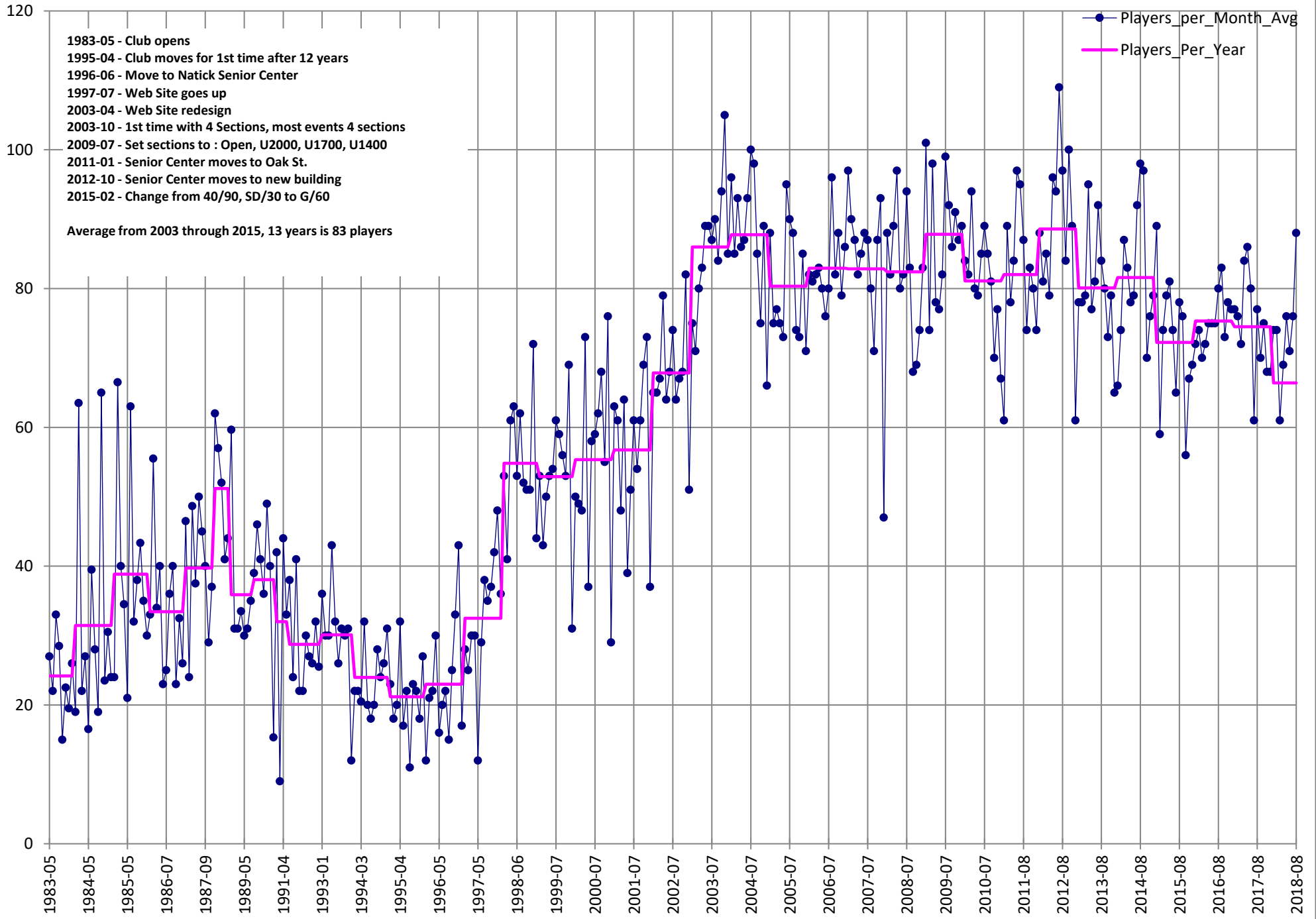
Charts in this PDF

- 1 Average Attendance per Month
- 2 Average Attendance by Month detailed
- 3 Attendance by Month over last 3 years
- 4 Attendance Trend
- 5 Attendance per Month per Section
- 6 Attendance per Month per Section 3D view
- 7 Attendance per Month per Section - Difference from the ideal of 20 players per section

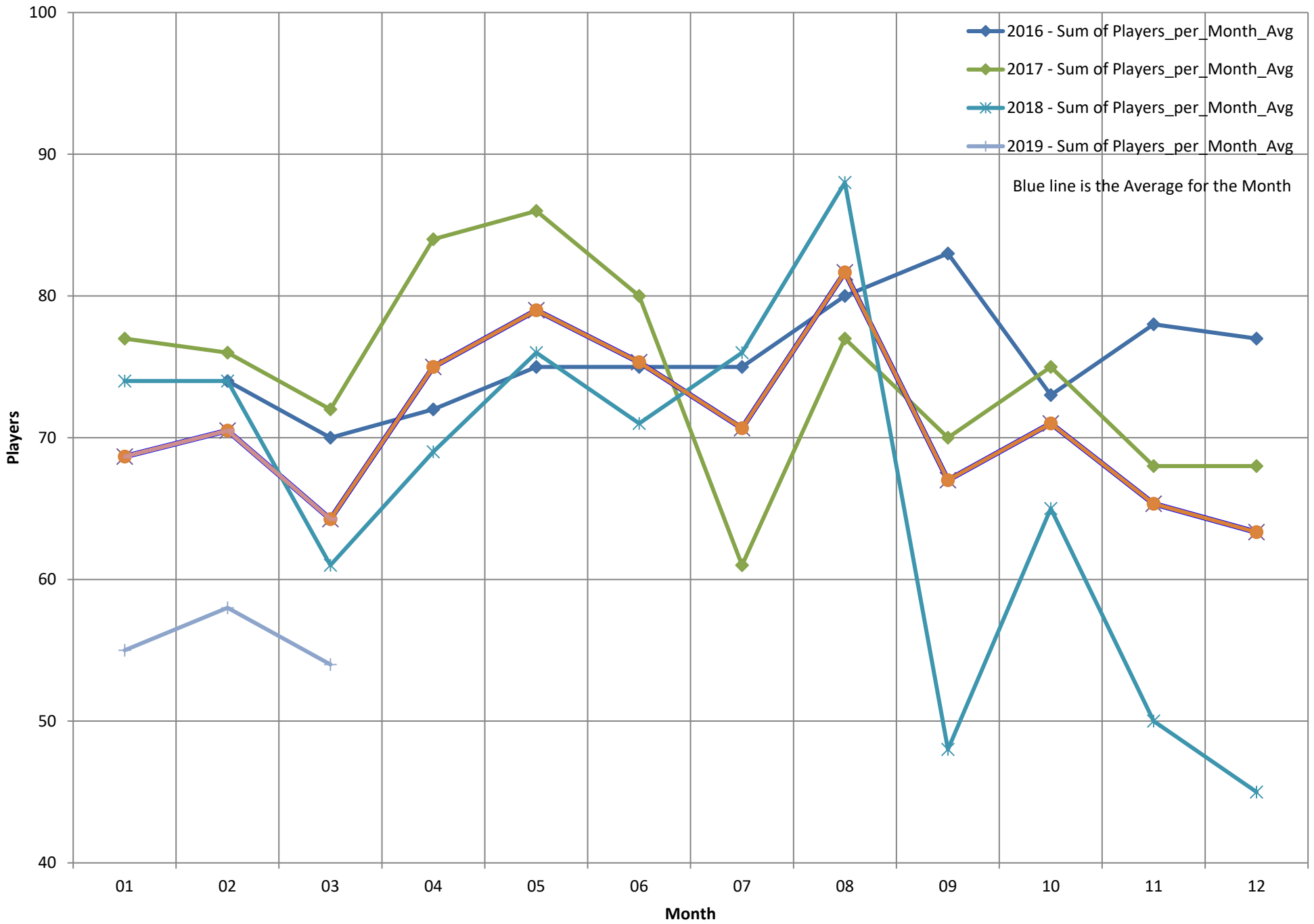
Average Attendance per Month



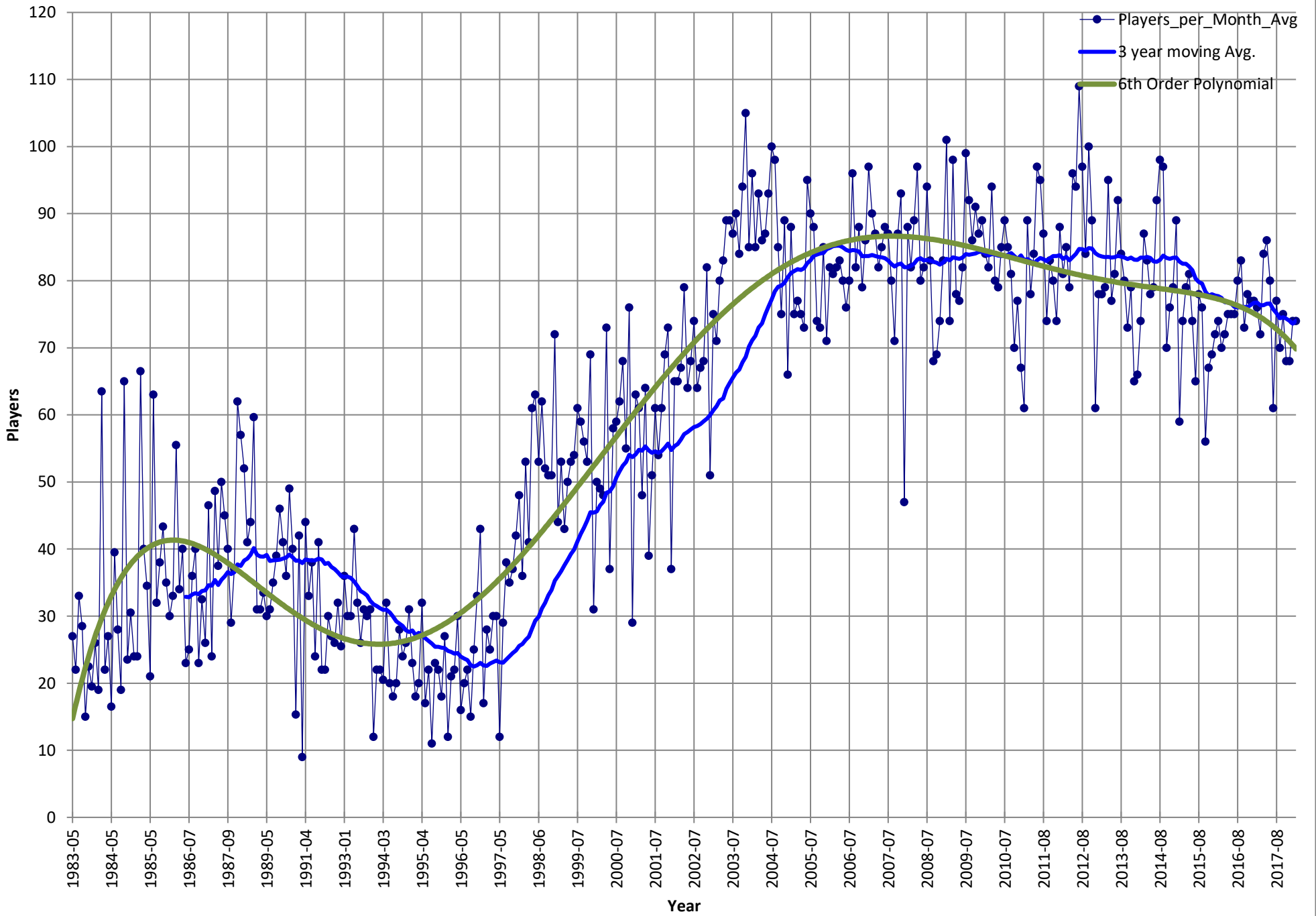
Average Attendance by Month detailed



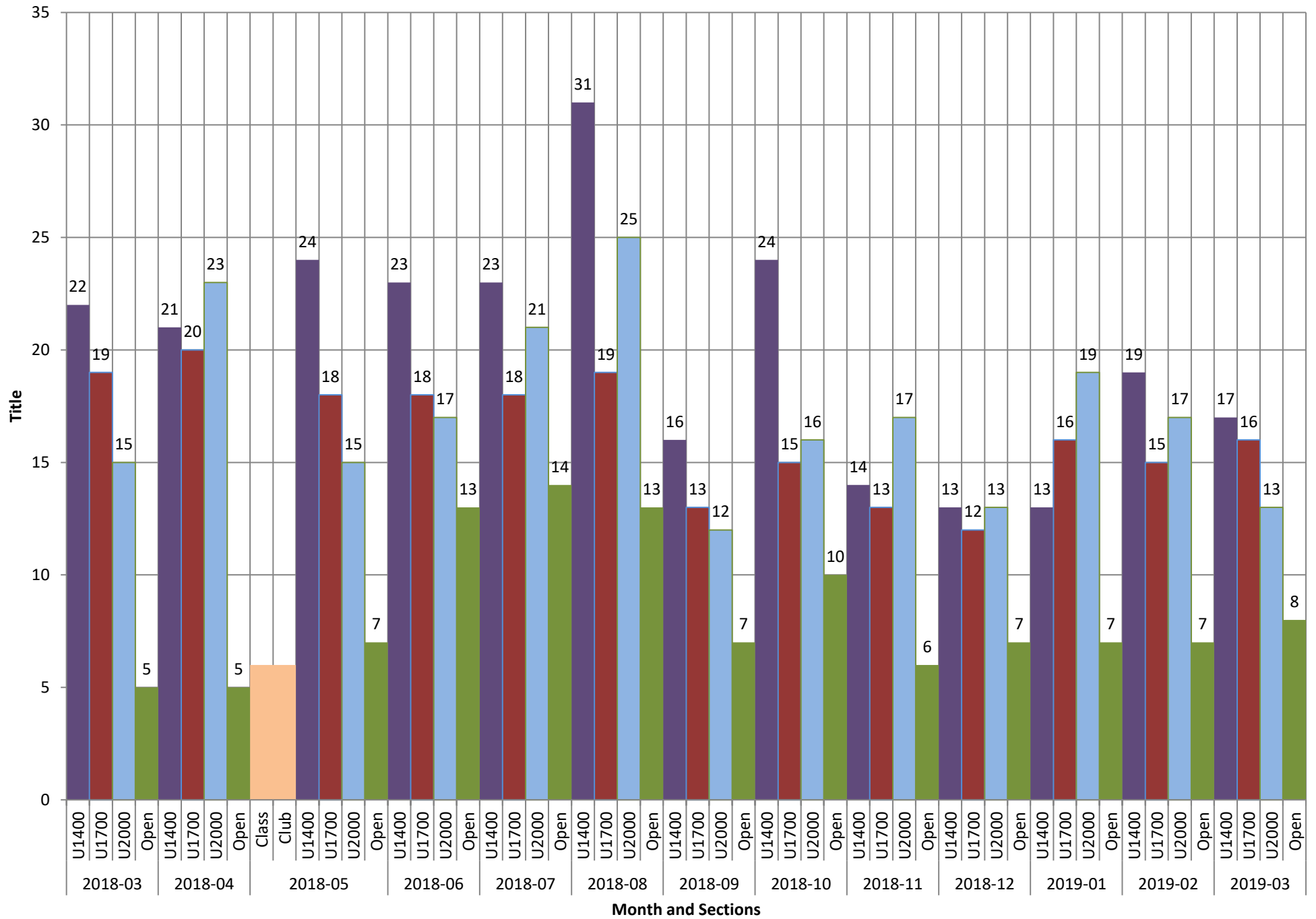
Attendance by Month over last 3 years



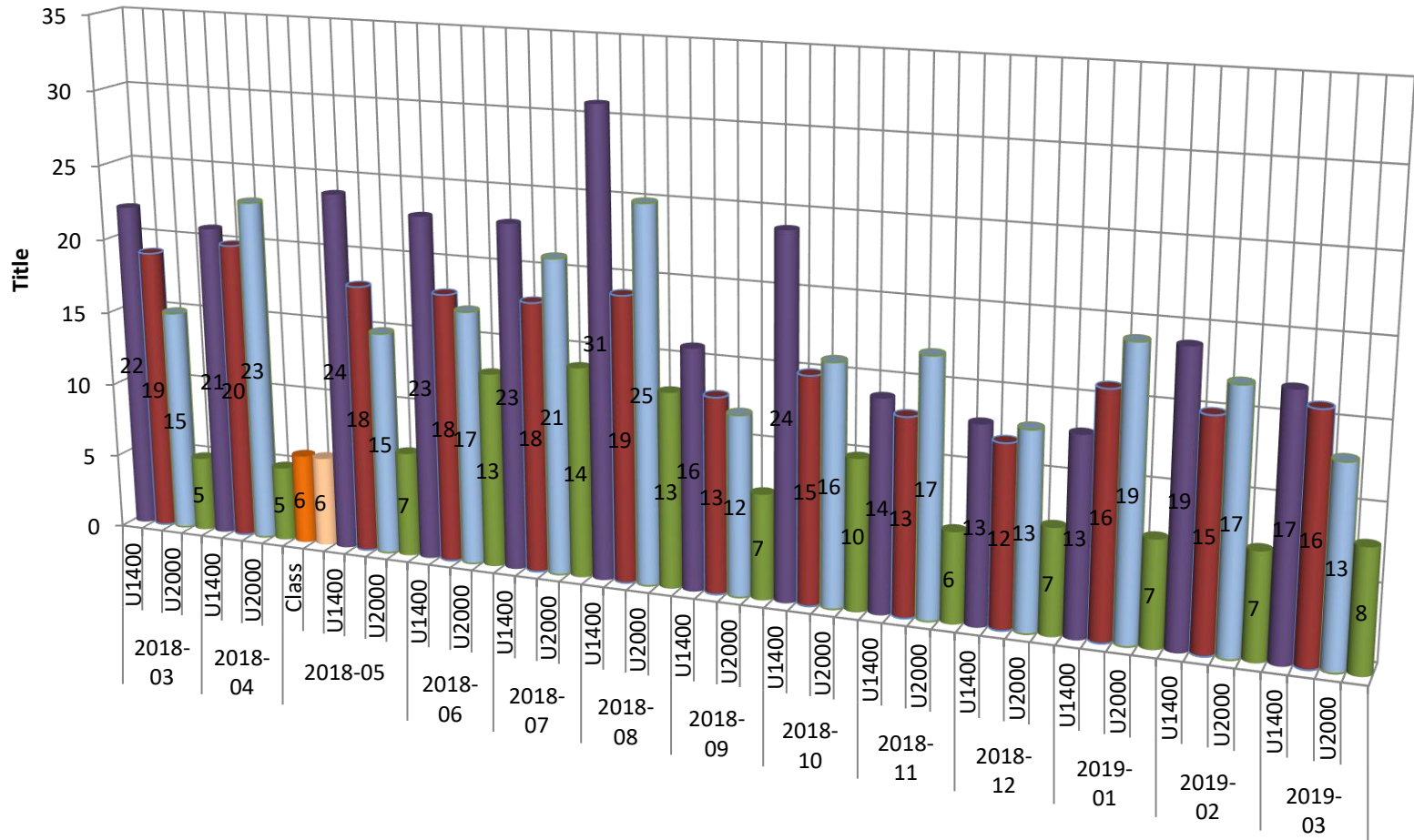
Attendance Trend



Attendance per Month per Section



Attendance per Month per Section 3D view



	2018-03				2018-04				2018-05				2018-06				2018-07				2018-08				2018-09				2018-10				2018-11				2018-12				2019-01				2019-02				2019-03											
	U1400	U1700	U2000	Open	U1400	U1700	U2000	Open	Class	U1400	U1700	U2000	Open	U1400	U1700	U2000	Open	U1400	U1700	U2000	Open	U1400	U1700	U2000	Open	U1400	U1700	U2000	Open	U1400	U1700	U2000	Open	U1400	U1700	U2000	Open	U1400	U1700	U2000	Open	U1400	U1700	U2000	Open	U1400	U1700	U2000	Open											
2999				5				5				7				13				14				13				7				10				6				7				7				7				8								
2000			15				23					15				17				21				25				12				16				17				6				7				7				7								
1700	19						20					18				18				18				19				13				15				13				12				13				13				15				16				
1400	22						21					24				23				23				31				16				24				14				13				13				19				17								
0									6	6																																																		

Month and Sections

Attendance per Month per Section Difference from the ideal of 20 players per section

