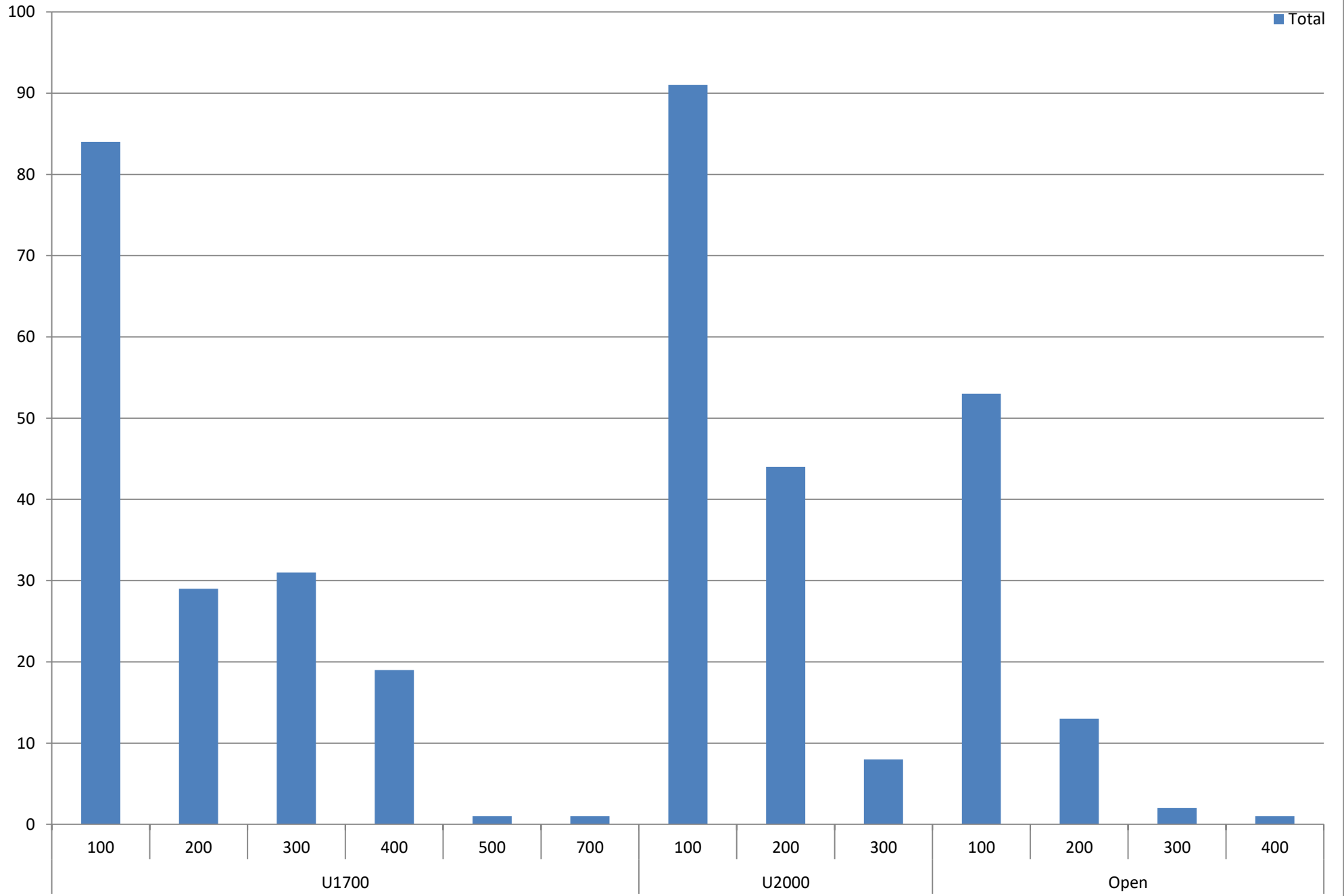


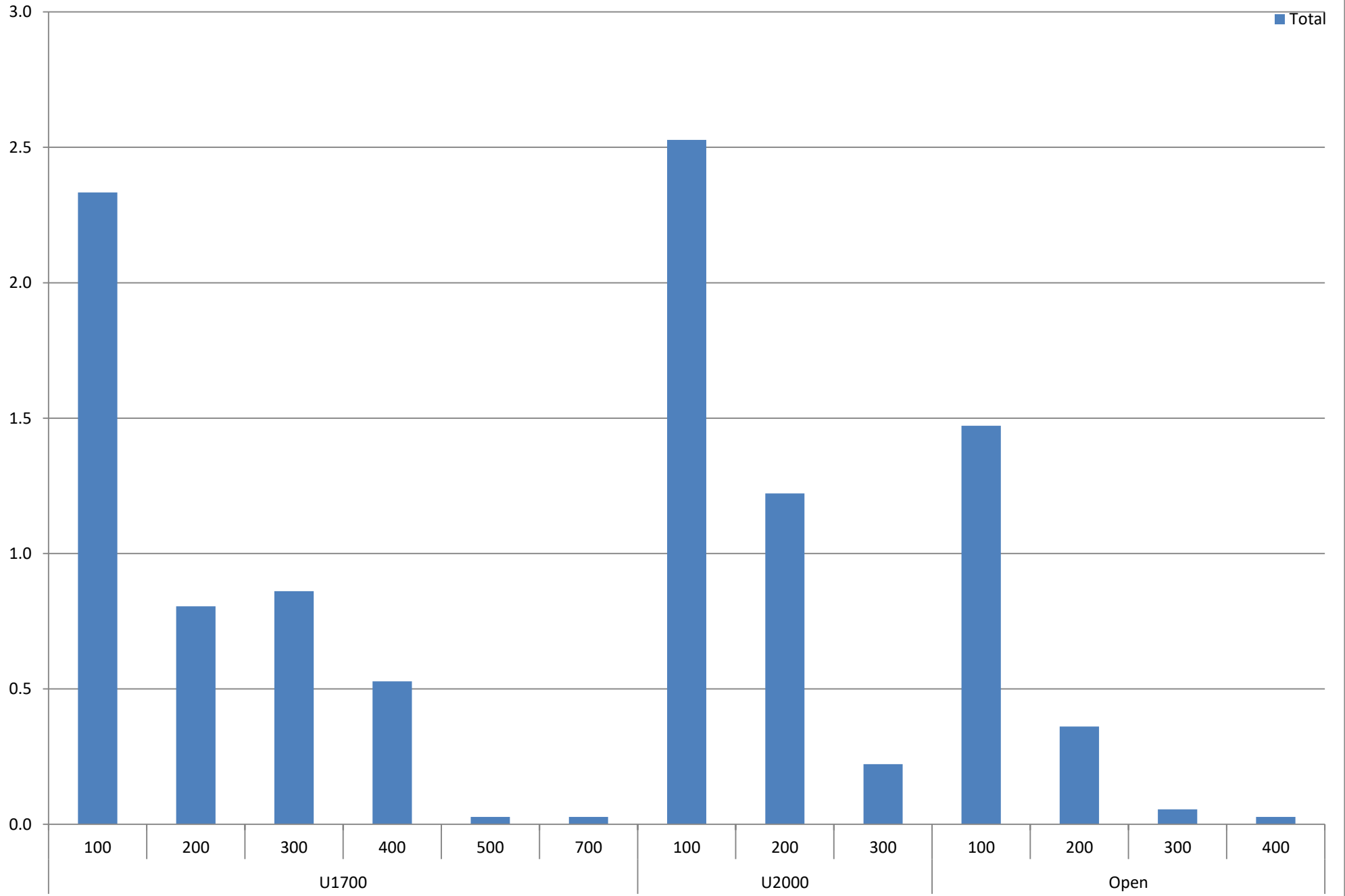
## Charts in this PDF

- 1 Number of players in a section - playing up from a lower section
- 2 Number of players in the Open Section - playing up from a lower section
- 3 Number of players in the U2000 section - playing up from a lower section
- 4 Number of players in the U1700 section - playing up from a lower section
- 5 Percentage of players in a section - playing up from a lower section
- 6 Percentage of players in the Open section - playing up from a lower section
- 7 Percentage of players in the U2000 section - playing up from a lower section
- 8 Percentage of players in the U1700 section - playing up from a lower section
- 9 Total times a player played up - and was within N points of their natural sections ceiling - (most recent 3 years)
- 10 Average of how many times a player played up - and was within N points of their natural sections ceiling - (most recent 3 years)

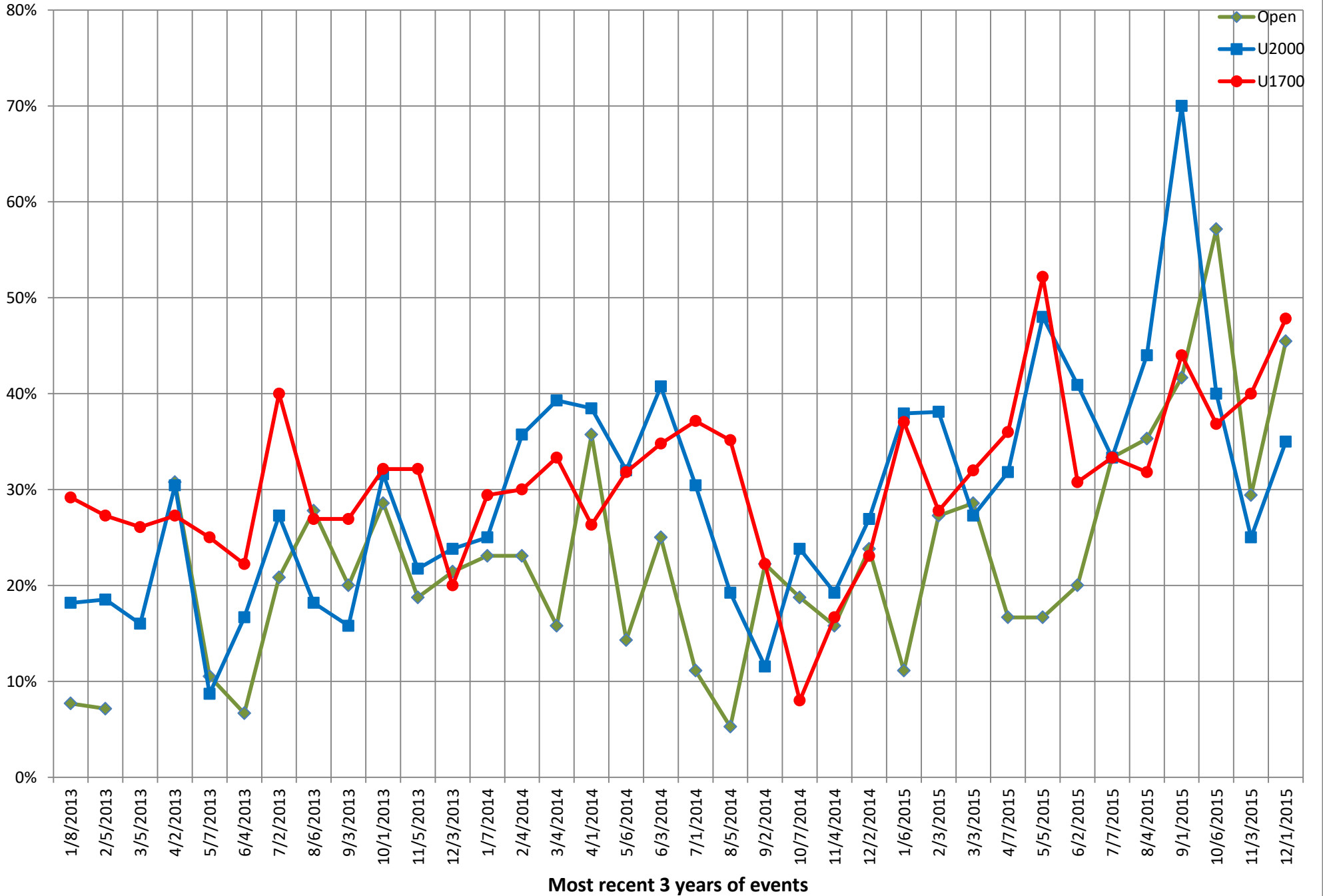
**Total times a player played up  
and was within N points of their natural sections ceiling**  
(most recent 3 years)



**Average of how many times a player played up  
and was within N points of their natural sections ceiling**  
(most recent 3 years)

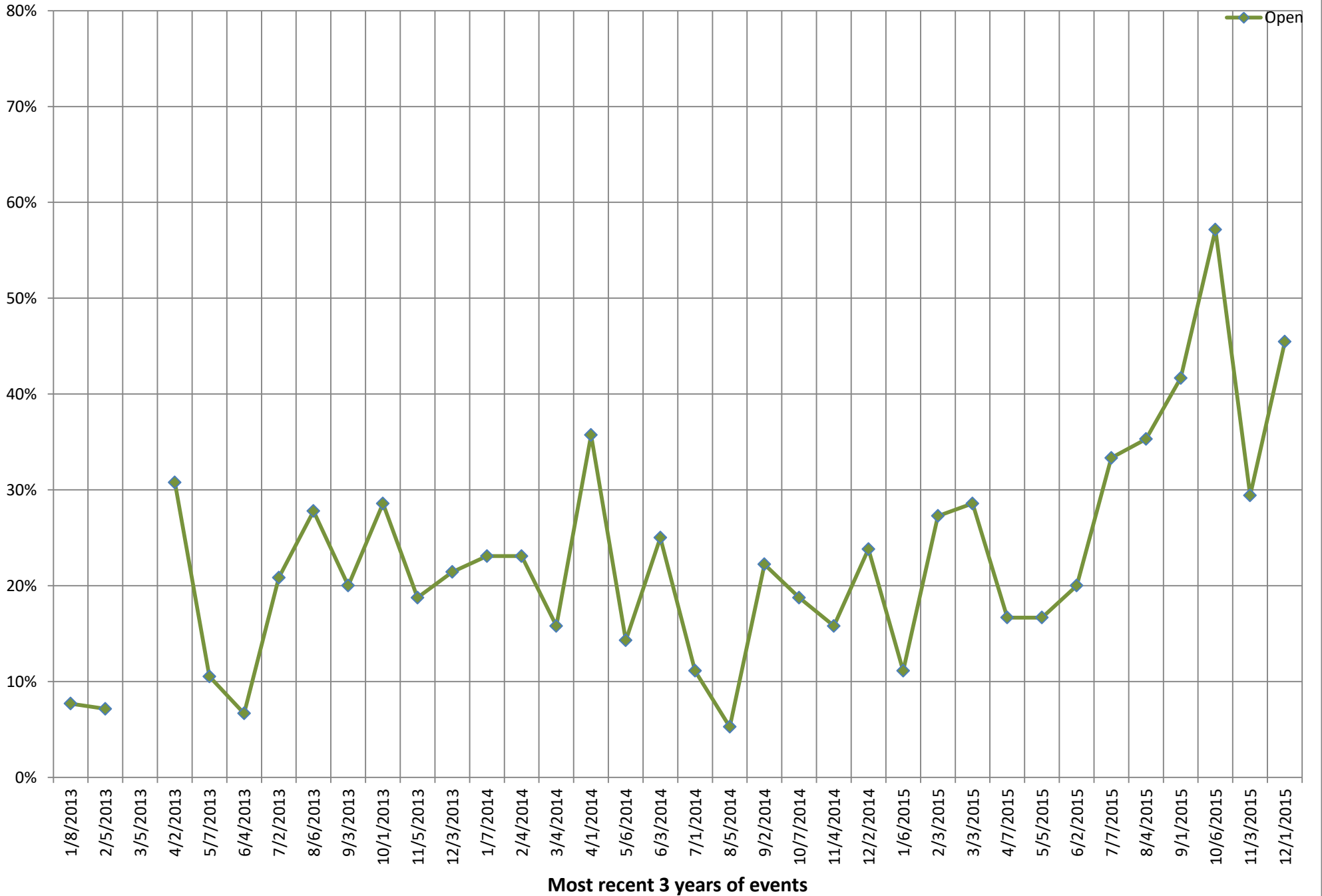


## Percentage of players in a section playing up from a lower section



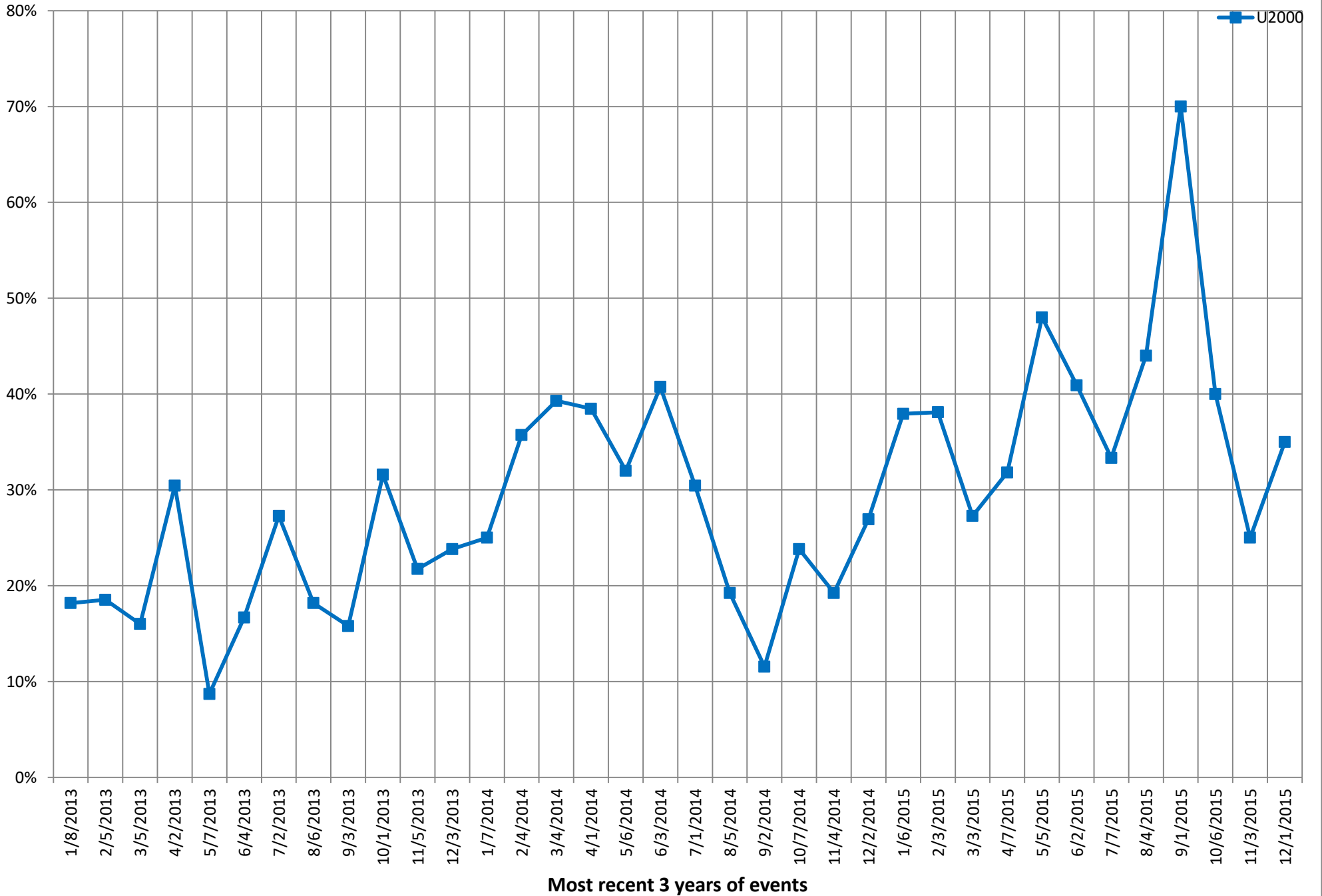
# Percentage of players in the Open section

playing up from a lower section



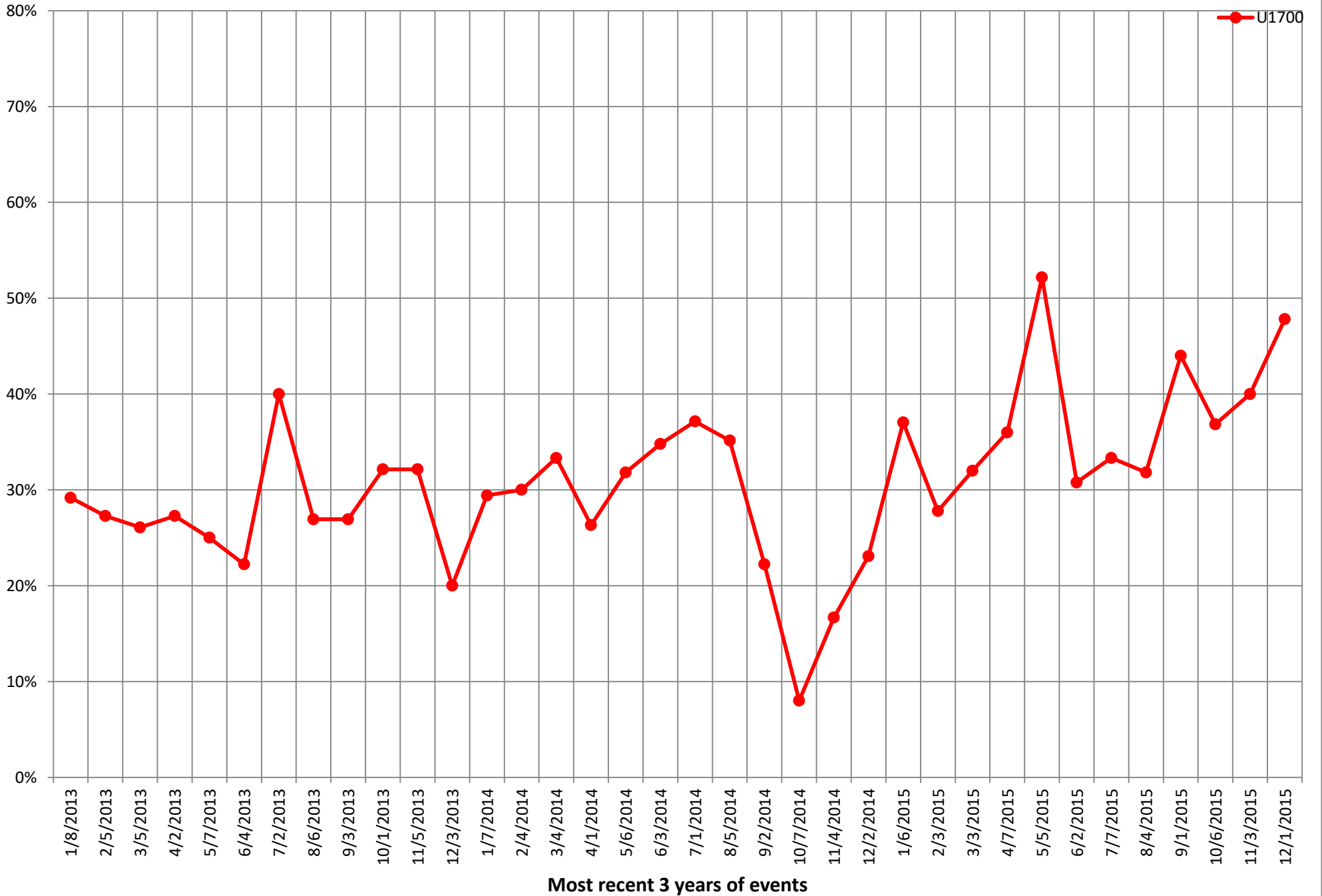
# Percentage of players in the U2000 section

playing up from a lower section



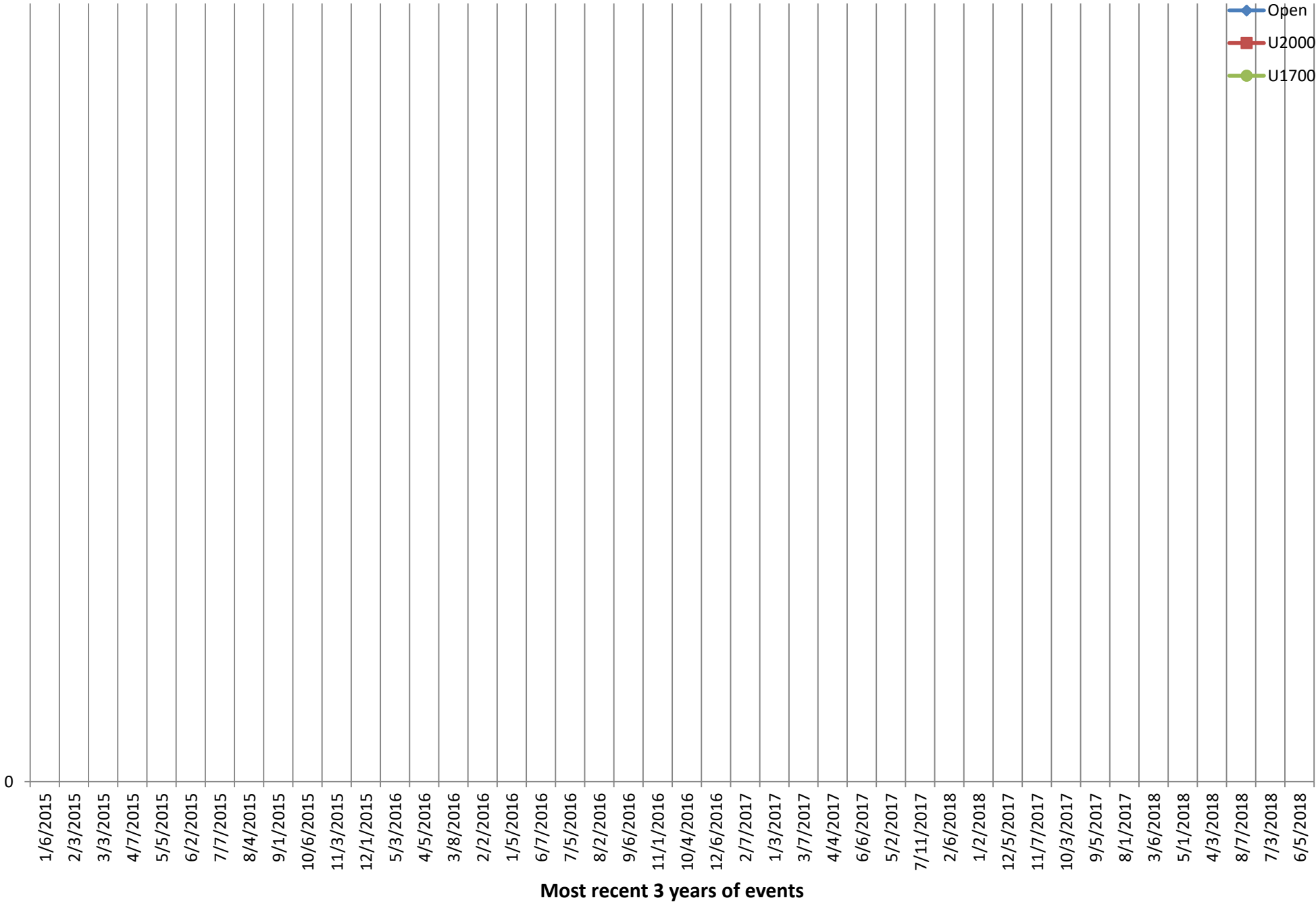
# Percentage of players in the U1700 section

playing up from a lower section



# Number of players in a section

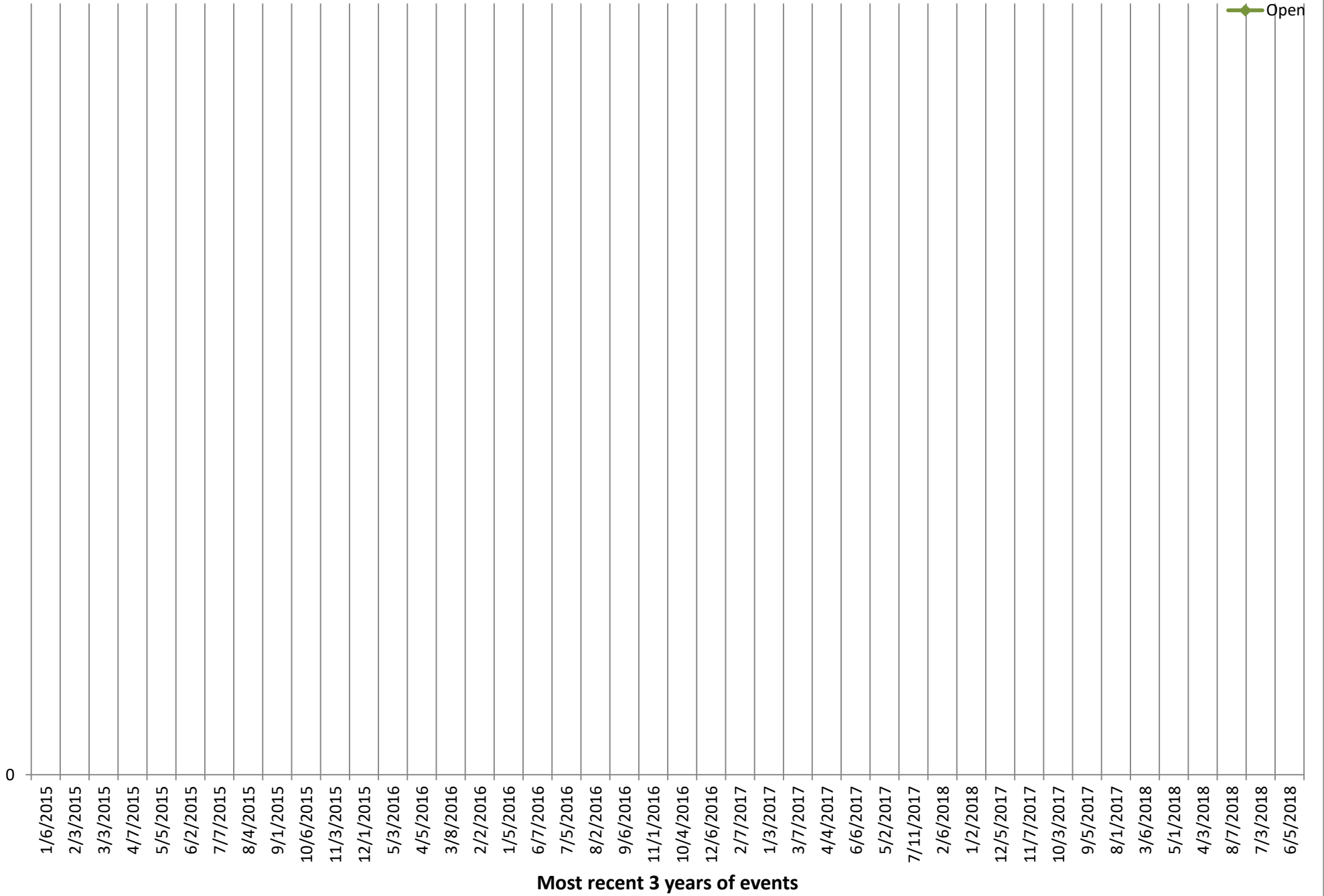
playing up from a lower section





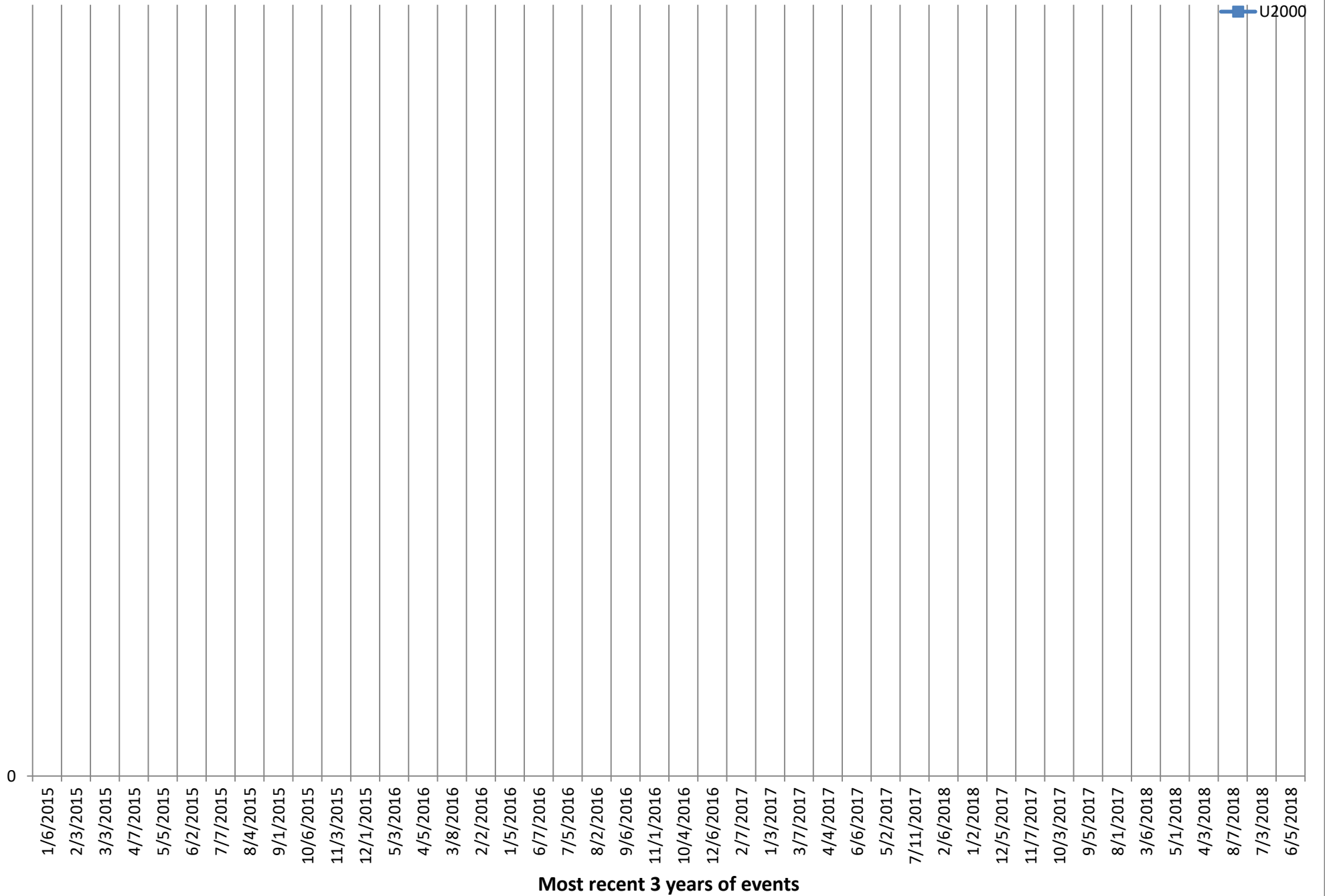
# Number of players in the Open Section

playing up from a lower section



# Number of players in the U2000 section

playing up from a lower section



# Number of players in the U1700 section

playing up from a lower section

