



# MetroWest Chess Club

Largest Chess Club in New England

Serving the MetroWest Boston chess community since 1983

## February 2005 Newsletter

- **Abbreviated Newsletter** → This newsletter contains only the January tournament results and the February tournament announcement. Next month a full newsletter will be published.
- **Family Teams** → Family teams can now "avoid pairings" in all sections except the Open section! This is a big step to making the Club even friendlier to families. We appreciate the direct and important impact that participating families had in making their case to the Board. The Board accepted the proposal unanimously. This change went into effect for the January 2005 event.
- **On-Time** → Weekly Group Lesson will start at 6:15 PM to allow for a full hour, ending promptly at 7:15 PM. Registration will close promptly at 7:20 pm so we can read pairings before 7:30 PM. We will start the clocks at 7:30 PM

## COMMUNITY :: Club and Partner Calendar

Tuesday March 1	<b>Round 1</b>  <table border="1" style="width: 100%;"> <tr> <td style="width: 25%;">What</td> <td><b>Valentine Swiss</b></td> </tr> <tr> <td>When</td> <td><b>February 1-8-15-22, 2005</b></td> </tr> <tr> <td>Format</td> <td>4-SS, 40/90, SD/30</td> </tr> <tr> <td>Prizes</td> <td>\$ 840, 100% G</td> </tr> <tr> <td>Sections</td> <td>                     Open: \$ 200-120-80                      U1900: \$ 110-70-40                      U1650: \$ 60-40-30                      U1350: \$ 40-30-20                 </td> </tr> <tr> <td>Entry Fee (all sections)</td> <td>                     Masters (2200 and over) Free                      MCC Members \$ 15                      Others \$ 20                 </td> </tr> <tr> <td>Championship Points Available</td> <td>                     Open (64-32-16), U1900 (24-12), U1650 (8)                      plus 50% bonus for perfect score of all wins                 </td> </tr> </table> <ul style="list-style-type: none"> <li>• Stateline Chess book &amp; equipment vendor</li> </ul>	What	<b>Valentine Swiss</b>	When	<b>February 1-8-15-22, 2005</b>	Format	4-SS, 40/90, SD/30	Prizes	\$ 840, 100% G	Sections	Open: \$ 200-120-80 U1900: \$ 110-70-40 U1650: \$ 60-40-30 U1350: \$ 40-30-20	Entry Fee (all sections)	Masters (2200 and over) Free MCC Members \$ 15 Others \$ 20	Championship Points Available	Open (64-32-16), U1900 (24-12), U1650 (8) plus 50% bonus for perfect score of all wins
What	<b>Valentine Swiss</b>														
When	<b>February 1-8-15-22, 2005</b>														
Format	4-SS, 40/90, SD/30														
Prizes	\$ 840, 100% G														
Sections	Open: \$ 200-120-80 U1900: \$ 110-70-40 U1650: \$ 60-40-30 U1350: \$ 40-30-20														
Entry Fee (all sections)	Masters (2200 and over) Free MCC Members \$ 15 Others \$ 20														
Championship Points Available	Open (64-32-16), U1900 (24-12), U1650 (8) plus 50% bonus for perfect score of all wins														
Tuesday February 8	<b>Round 2</b> <ul style="list-style-type: none"> <li>• Weekly group lesson</li> </ul>														
Tuesday February 15	<b>Round 3</b> <ul style="list-style-type: none"> <li>• Weekly group lesson</li> </ul>														
Tuesday February 22	<b>Round 4</b> <ul style="list-style-type: none"> <li>• Weekly group lesson</li> </ul>														
Sunday March 13	<b>NorthEast Chess G/5 and G/55 and G/90, Marlboro Radisson Hotel</b>														

## COMPETE :: Monthly Tournaments

Section results below –

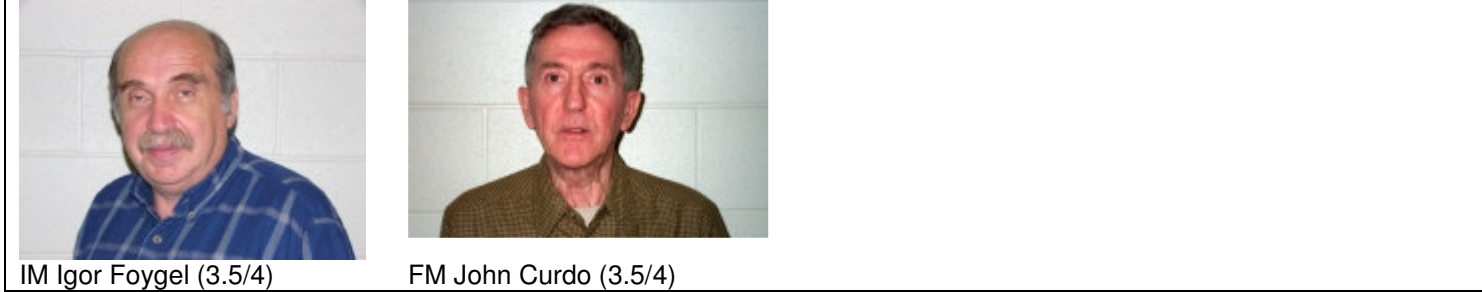
Print them and show your friends 😊



# January 2005 Event Winners

**OPEN**

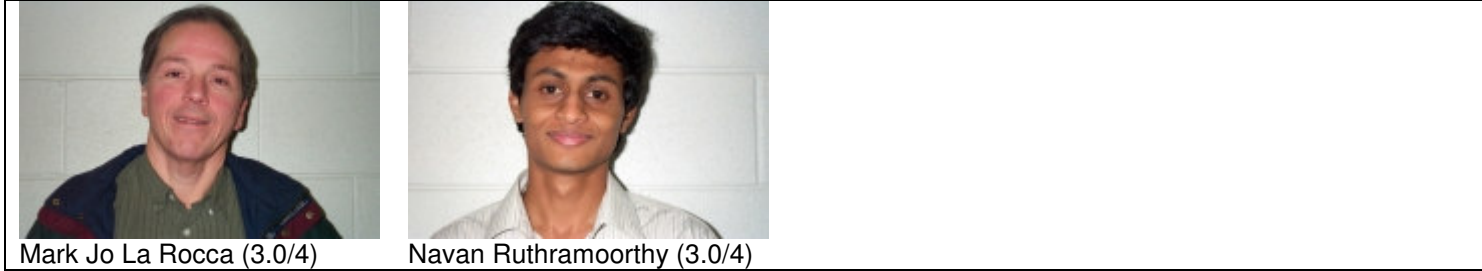
## 1<sup>st</sup> Prize (2-way tie)



IM Igor Foygel (3.5/4)

FM John Curdo (3.5/4)

## 3<sup>rd</sup> Prize (2-way tie)



Mark Jo La Rocca (3.0/4)

Navan Ruthramoorthy (3.0/4)

## U2000 Class Contenders

None

## Upsets over 200 points



Niki Konovalchuk (2)

Alexander Paphitis

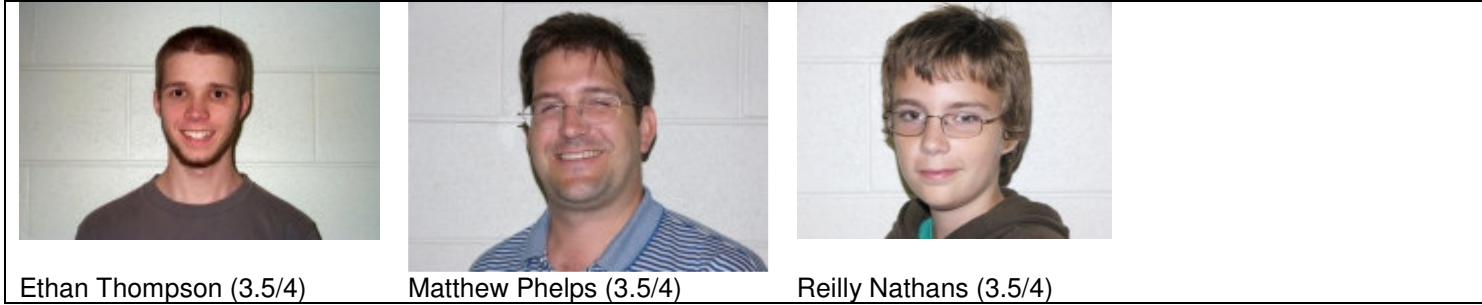
Derek Slater



**January 2005  
Event Winners**

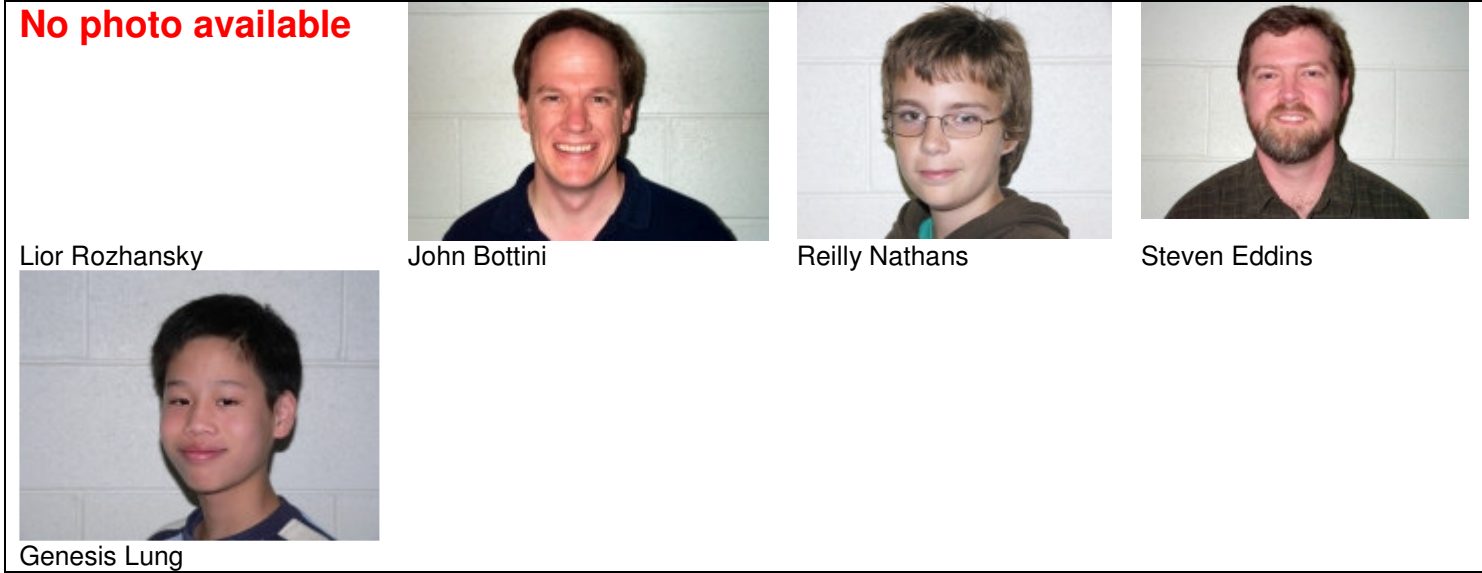
**U1850**

**1<sup>st</sup> Prize (3-way tie)**

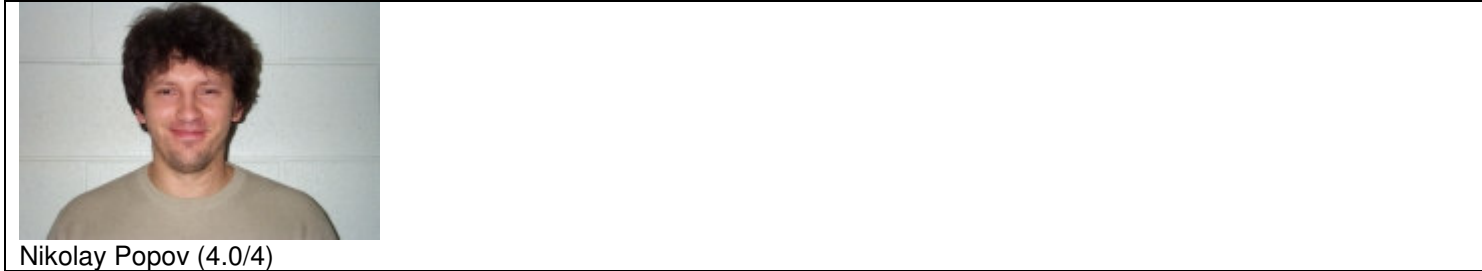


**Upsets over 200 points**

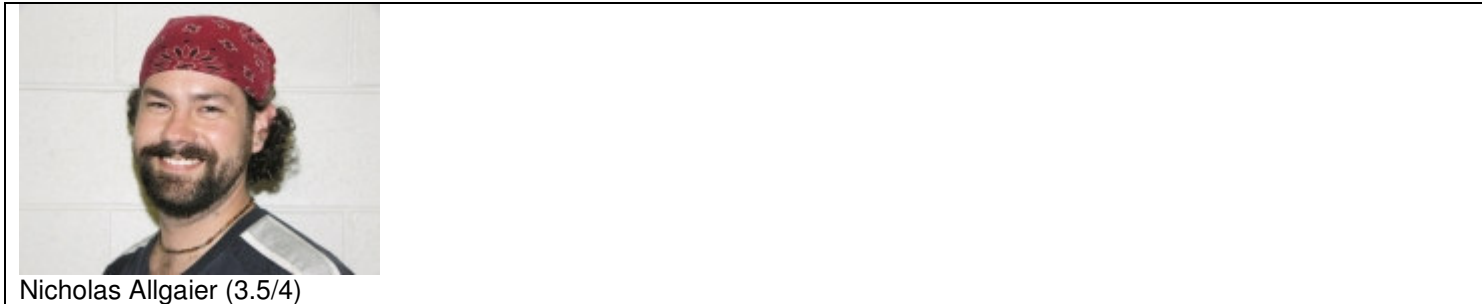
**No photo available**



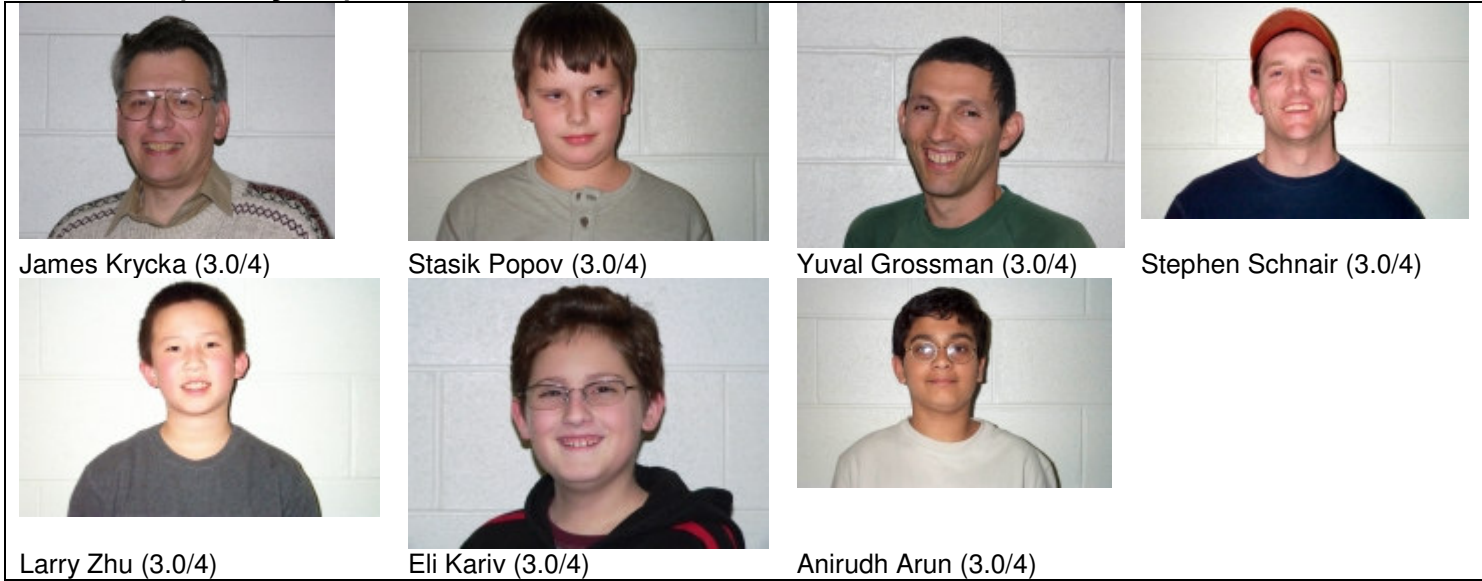
**1<sup>st</sup> Prize**



**2<sup>nd</sup> Prize**



**3<sup>rd</sup> Prize (7-way tie)**

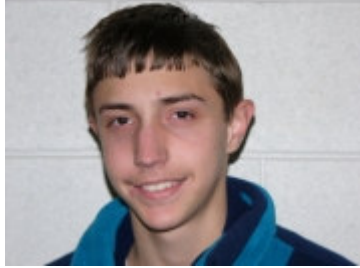


---

## Upsets over 200 points



Anirudh Arun (2)



Travis Nilsson



Eli Kriv



Larry Zhu



Ofer Grossman