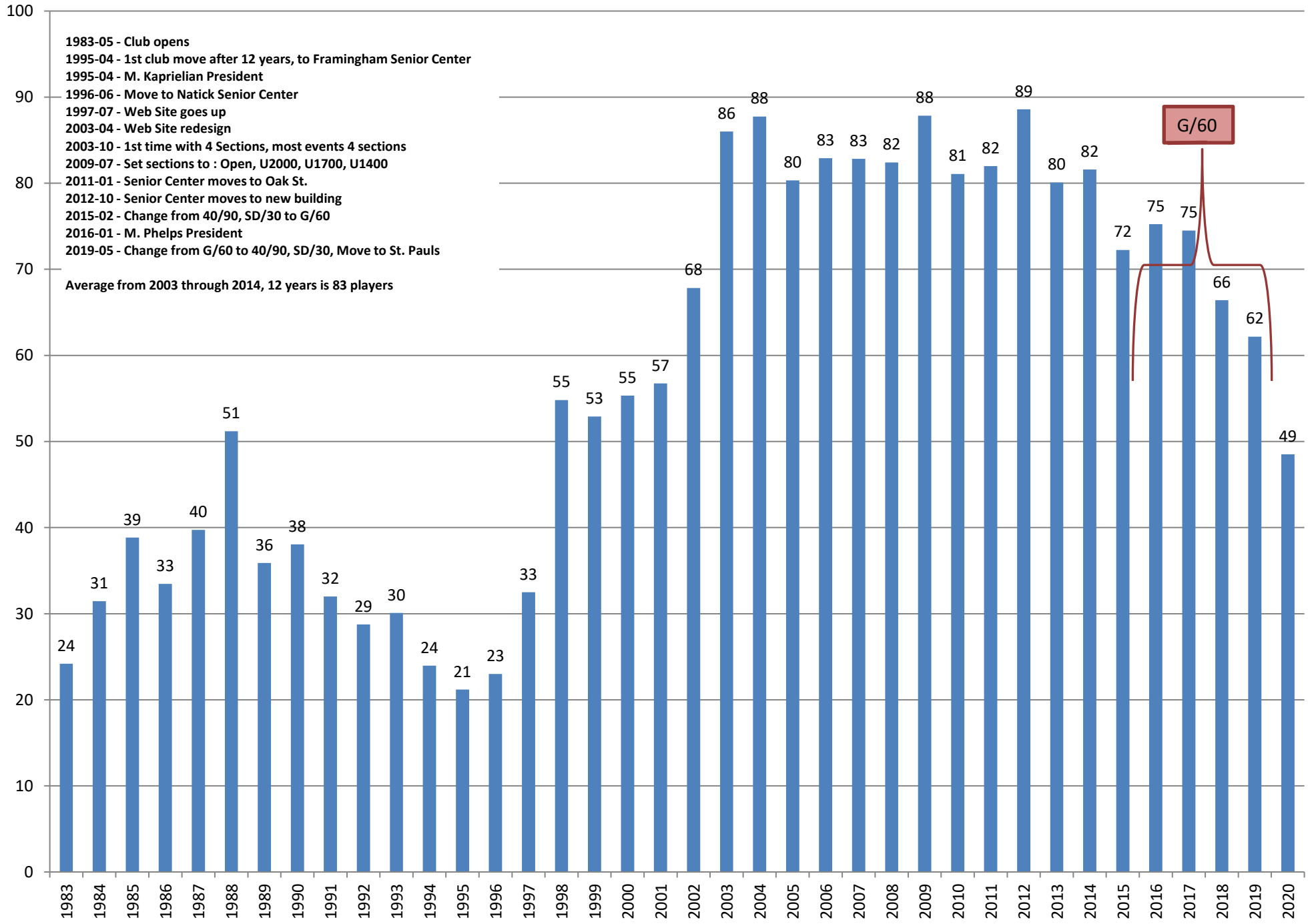


Charts in this PDF

- 1 Average Attendance per Month
- 2 Average Attendance by Month detailed
- 3 Attendance by Month over last 3 years
- 4 Attendance Trend
- 5 Attendance per Month per Section
- 6 Attendance per Month per Section 3D view
- 7 Attendance per Month per Section - Difference from the ideal of 20 players per section

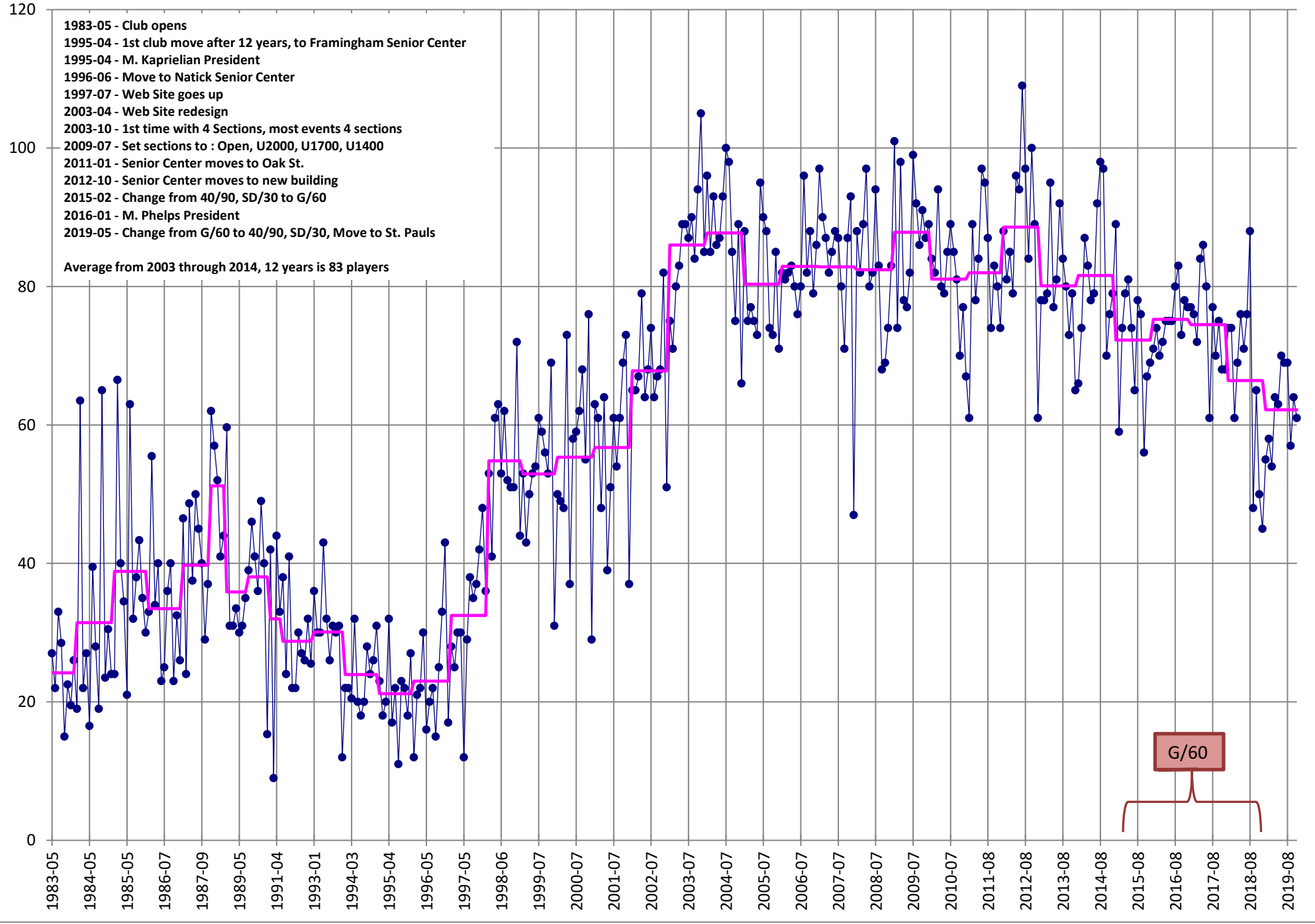
Average Attendance per Month



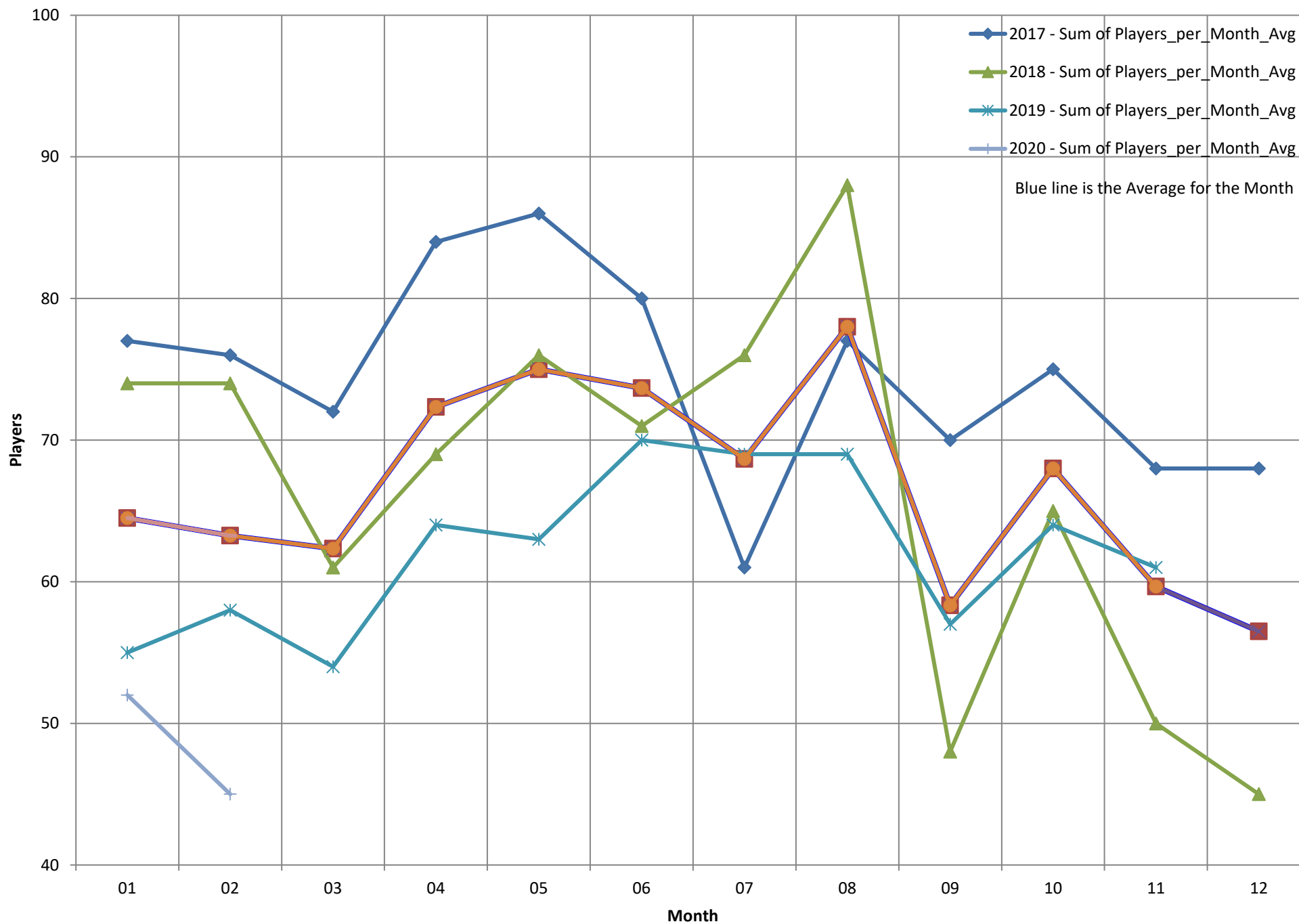
Average Attendance by Month detailed

● Players_per_Month_Avg

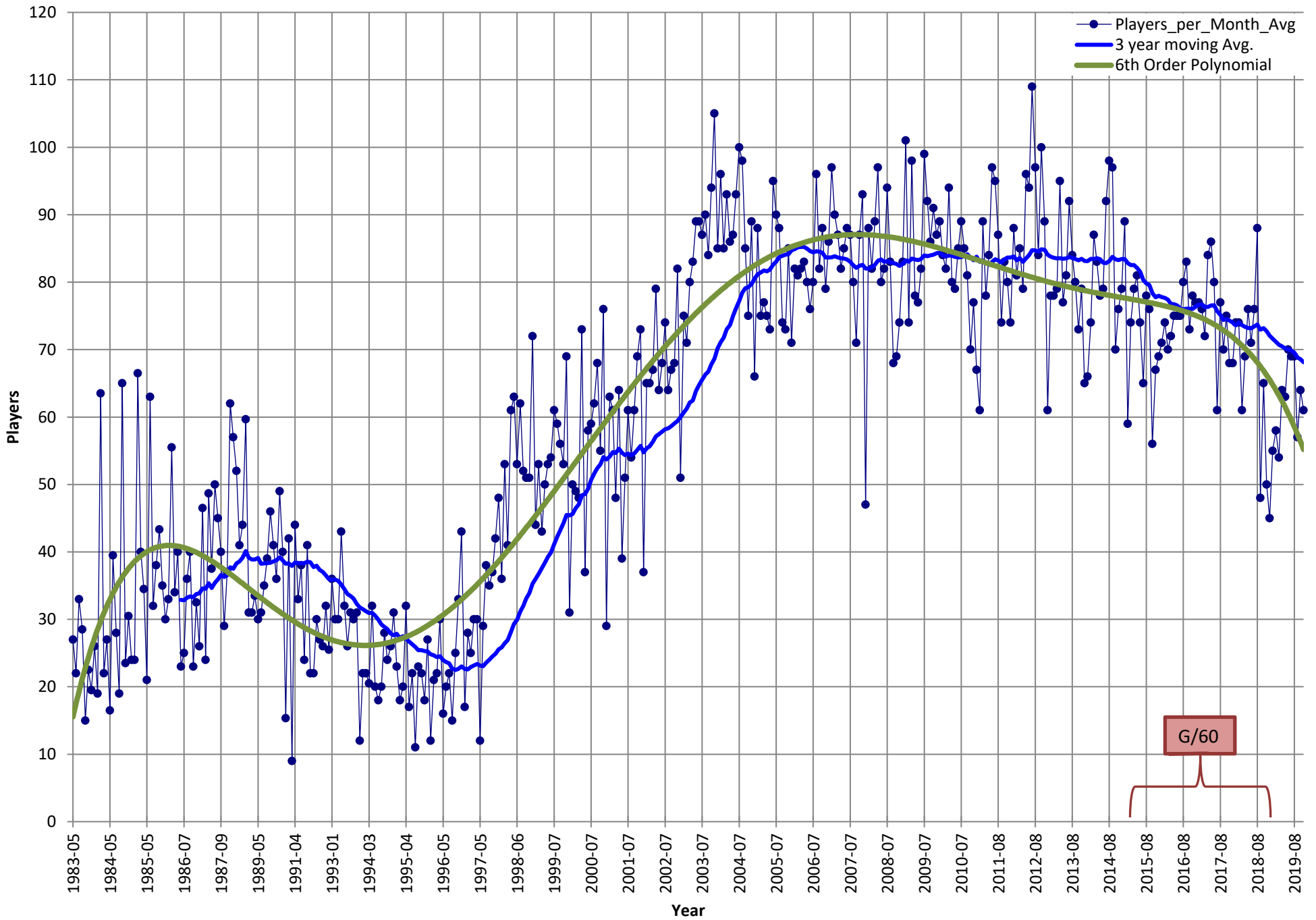
— Players_Per_Year



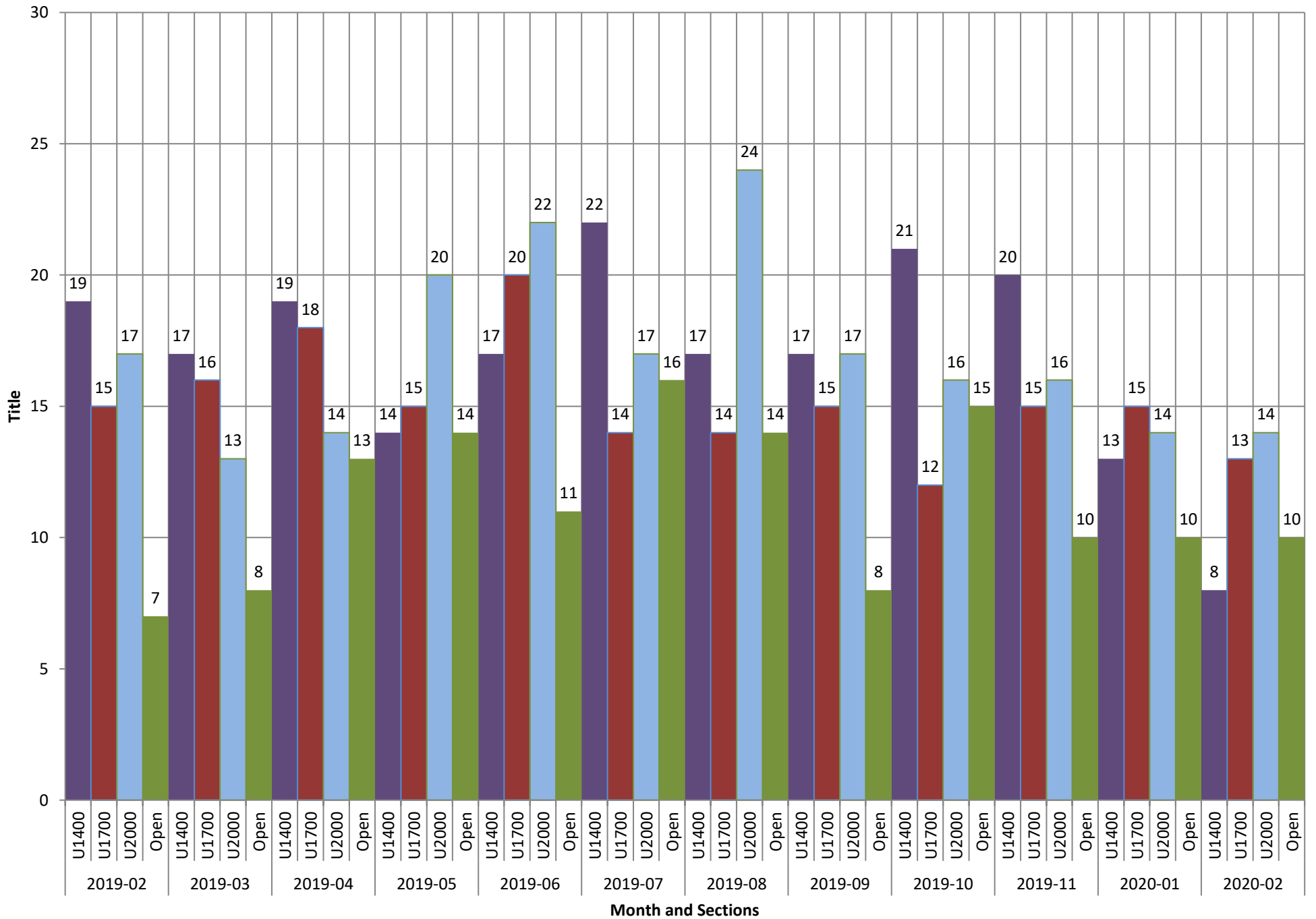
Attendance by Month over last 3 years



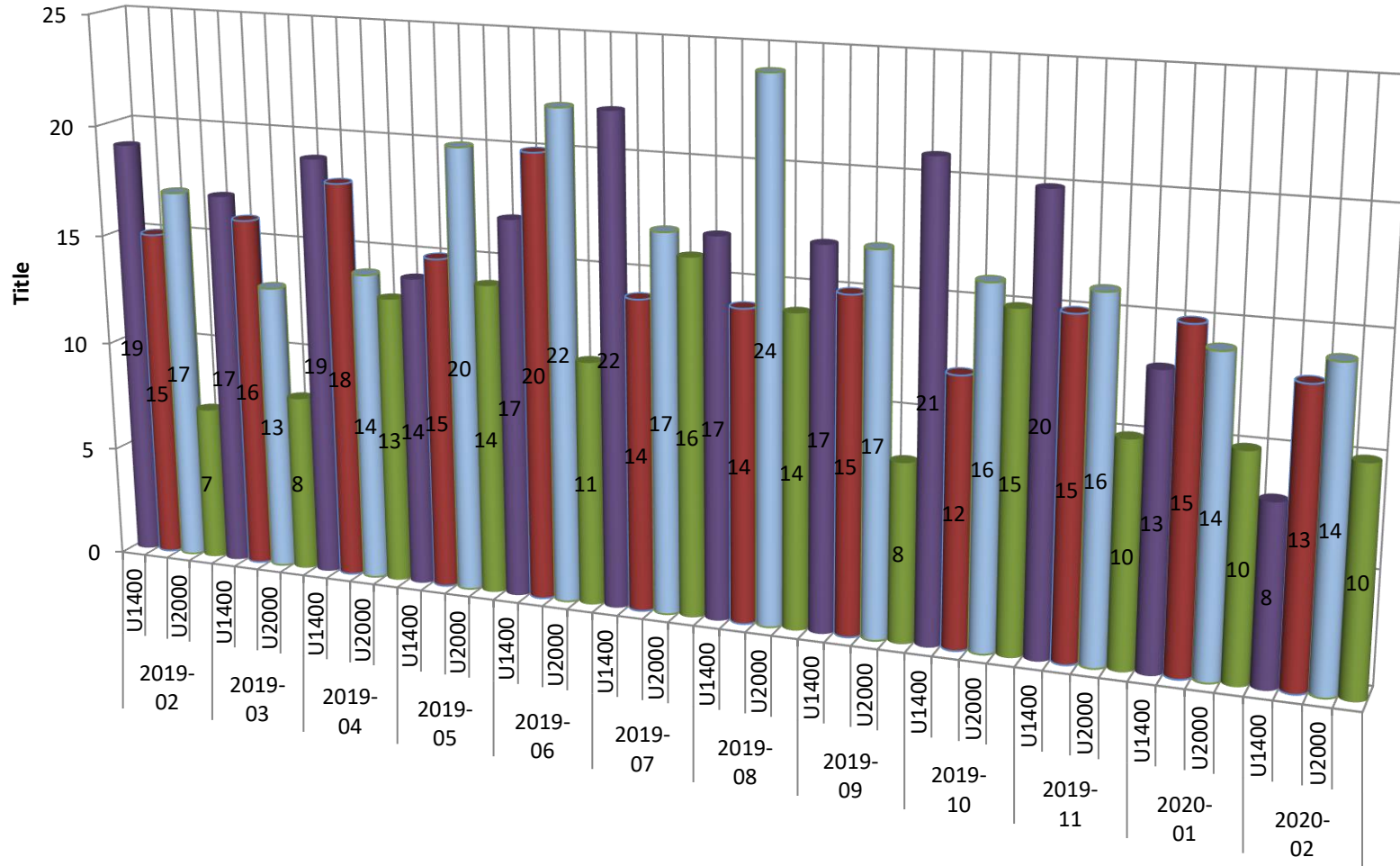
Attendance Trend



Attendance per Month per Section



Attendance per Month per Section 3D view



	2019-02				2019-03				2019-04				2019-05				2019-06				2019-07				2019-08				2019-09				2019-10				2019-11				2020-01				2020-02			
	U1400	U1700	U2000	Op en	U1400	U1700	U2000	Op en	U1400	U1700	U2000	Op en	U1400	U1700	U2000	Op en	U1400	U1700	U2000	Op en	U1400	U1700	U2000	Op en	U1400	U1700	U2000	Op en	U1400	U1700	U2000	Op en	U1400	U1700	U2000	Op en	U1400	U1700	U2000	Op en								
■ 2999				7				8				13				14				11				16				14				8				15				10								
■ 2000			17				13				14				20				17				24				17				16				16				14				14					
■ 1700	15				16				18				15				20				14				14				15				12				15				15				13			
■ 1400	19				17				19				14				17				22				17				17				21				20				13				8			

Month and Sections

Attendance per Month per Section Difference from the ideal of 20 players per section

