

Charts in this PDF

- 1 January
- 2 February
- 3 March
- 4 April
- 5 May
- 6 June
- 7 July
- 8 August
- 9 September
- 10 October
- 11 November
- 12 December

Most Recently Updated
Sunday, 20 January, 2019

All the charts in the PDF are for a single calendar year
A chart is produced for each months event.

As the year progresses the empty pages at the end of the PDF will be filled with the most recent month.

The delta is calculated using the USCF cross table that has been posted on the club's website.

The USCF does re-ratings of events once or twice a month.

This can result in some ratings changing from the report we downloaded and posted

The club generally does not bother updating our site to reflect those re-rated reports

Provisionally rated players were excluded from the charts

Provisional ratings can jump dramatically due to the formula used.

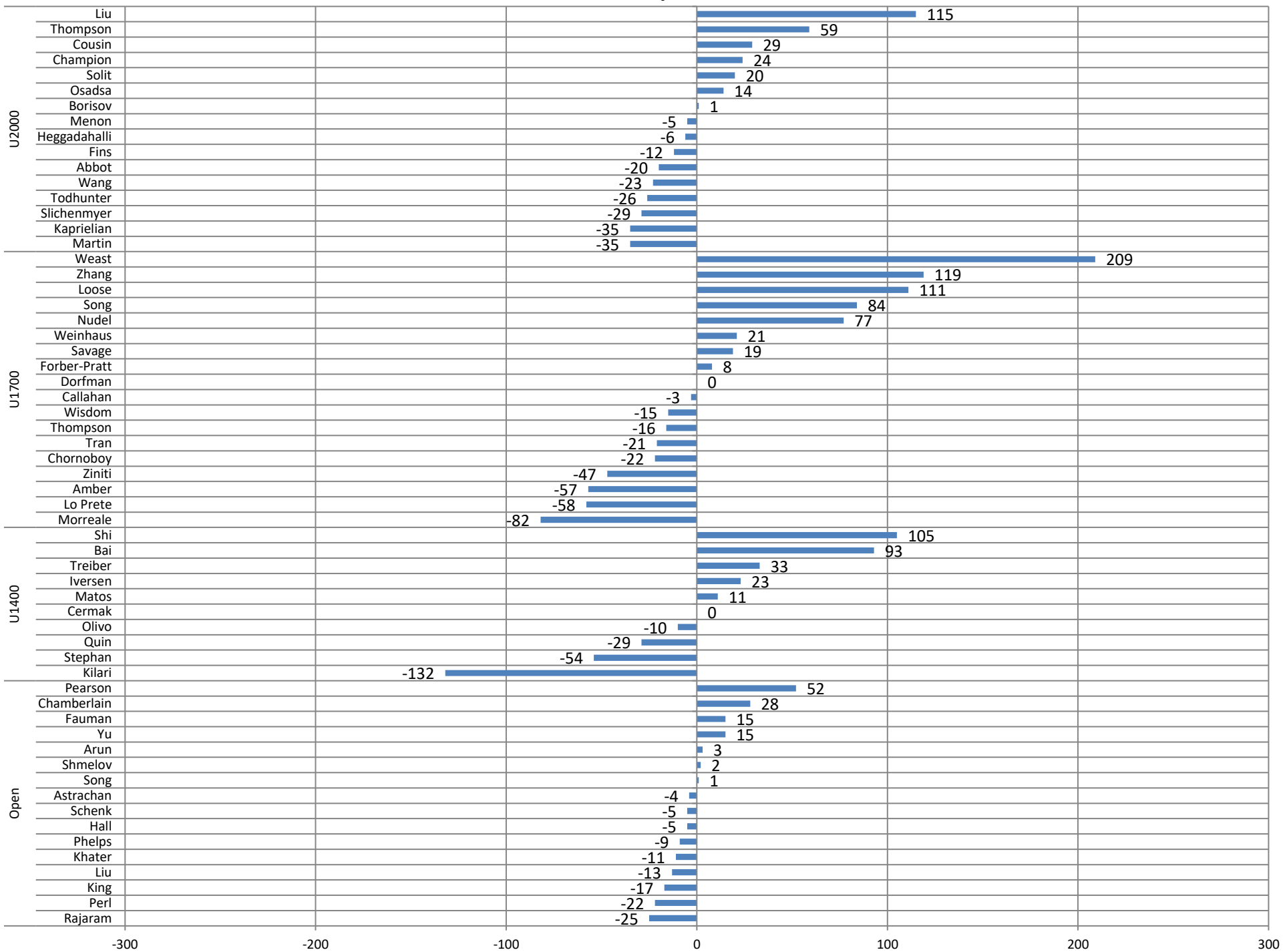
Once a player has reached 25 rated games the usual formula is used

If the player has a slash and digits after their rating, it means it is a provisional rating

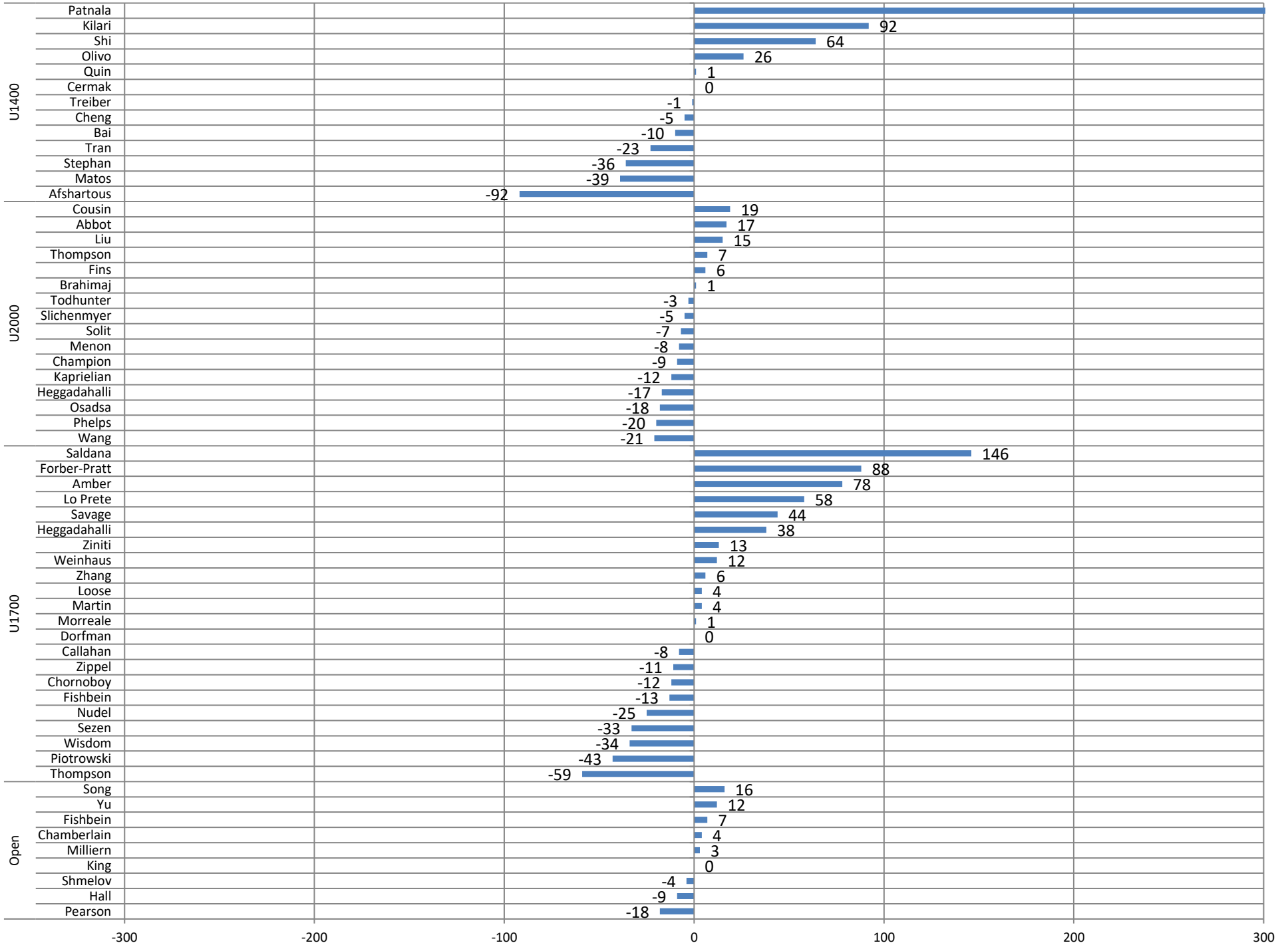
Example: 1445/13 means it is a provisional rating based on 13 games.

If the player was provisional either at the beginning or the end of the tournament they are excluded

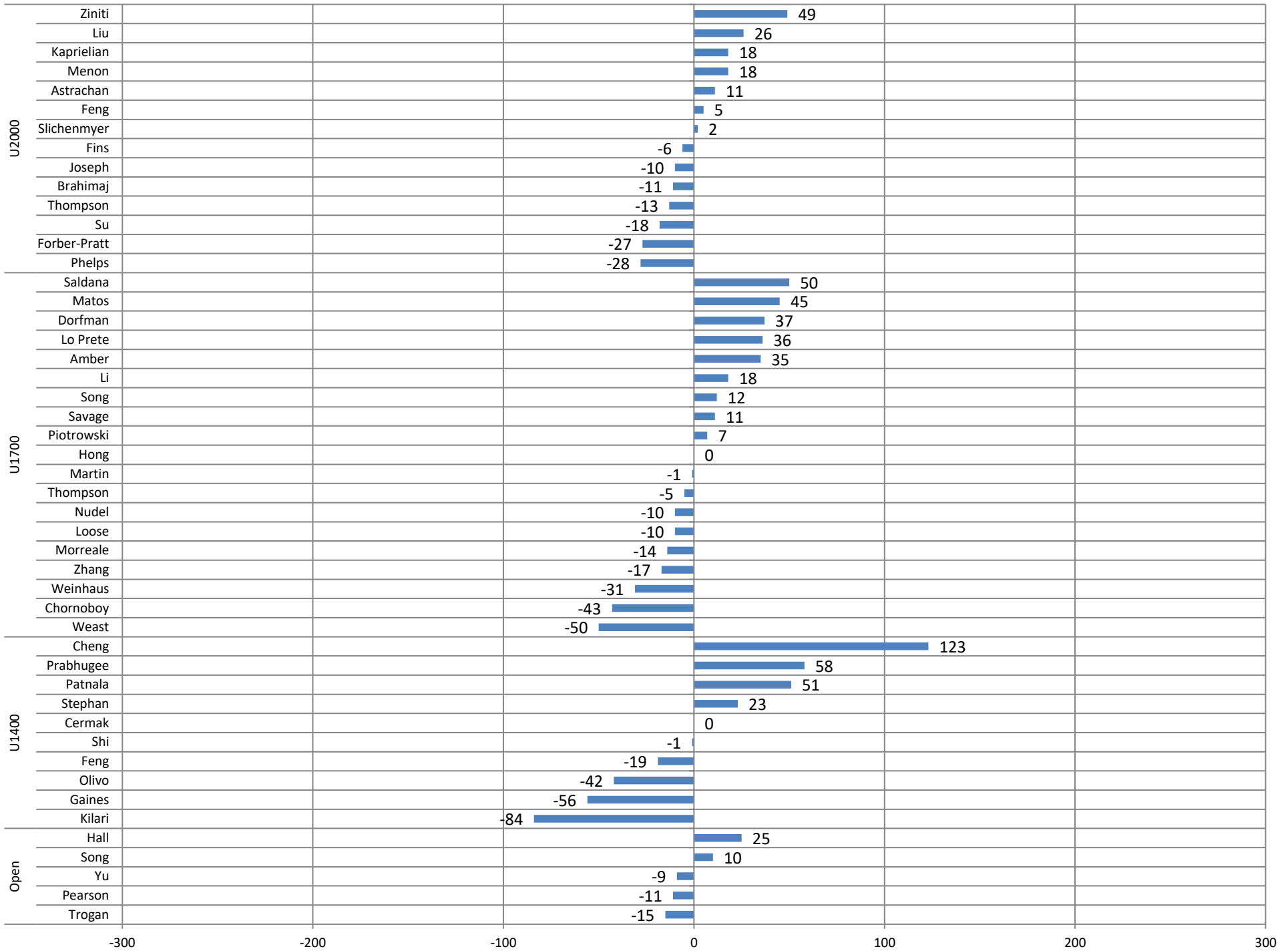
January



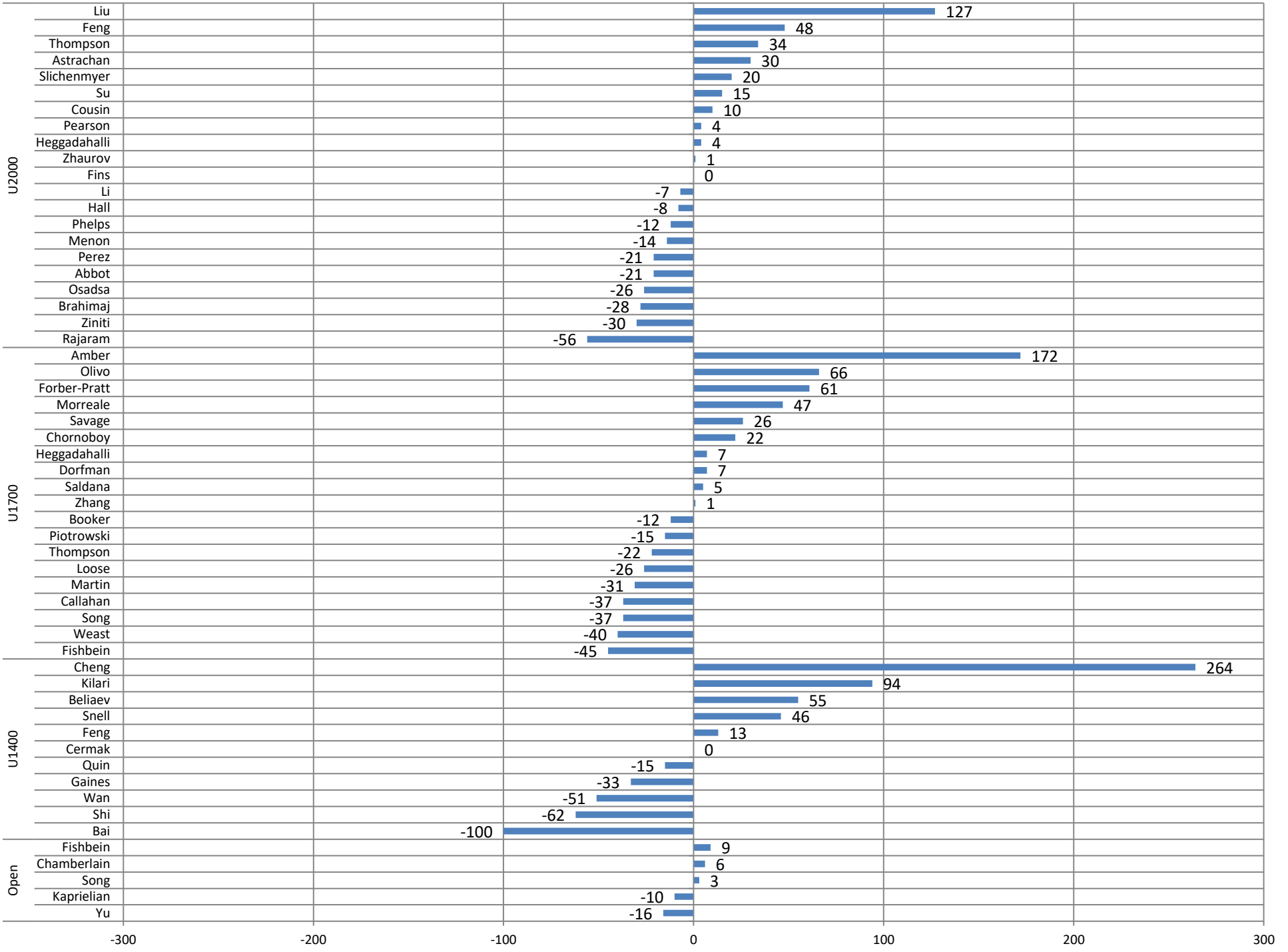
February



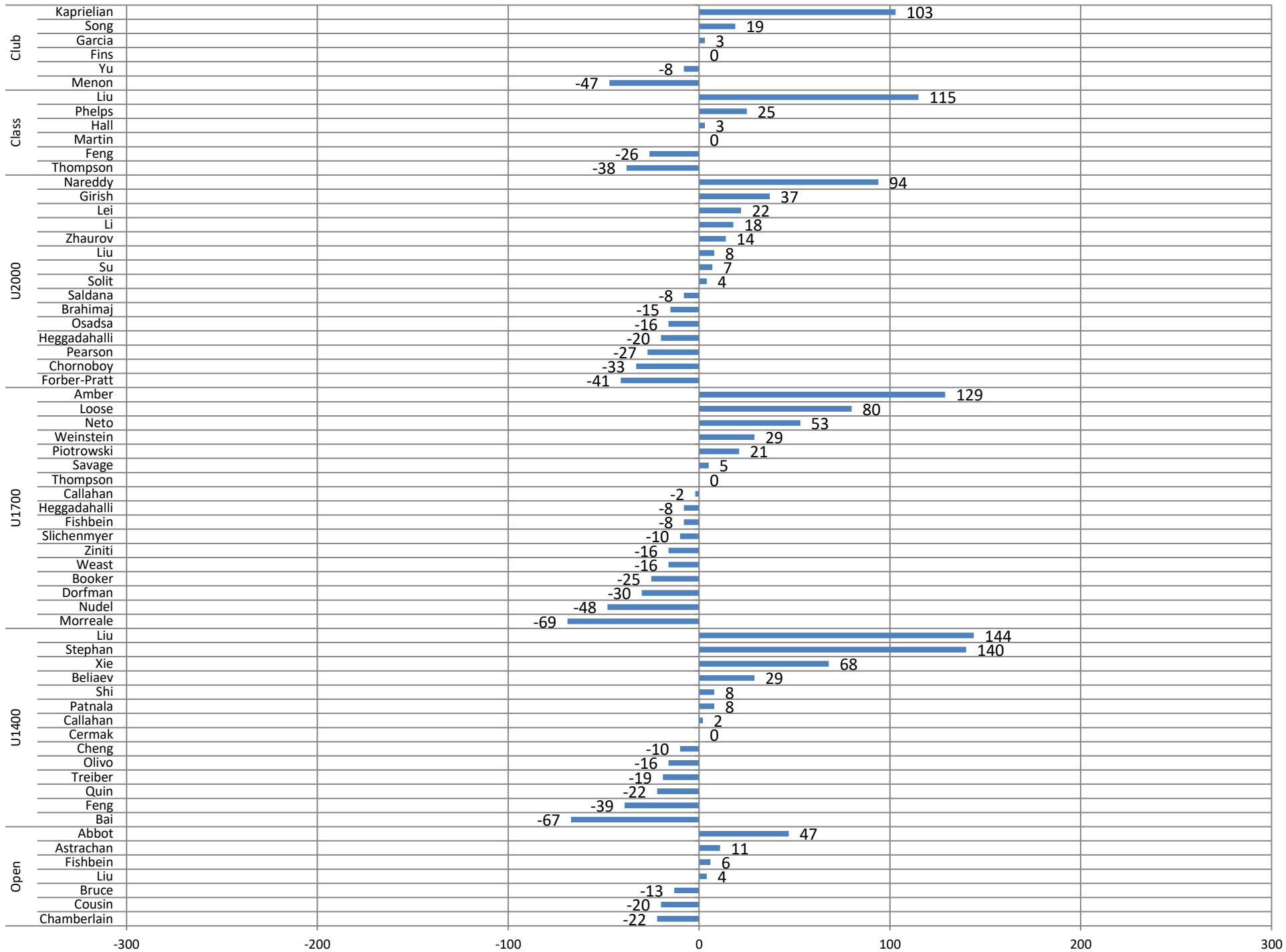
March



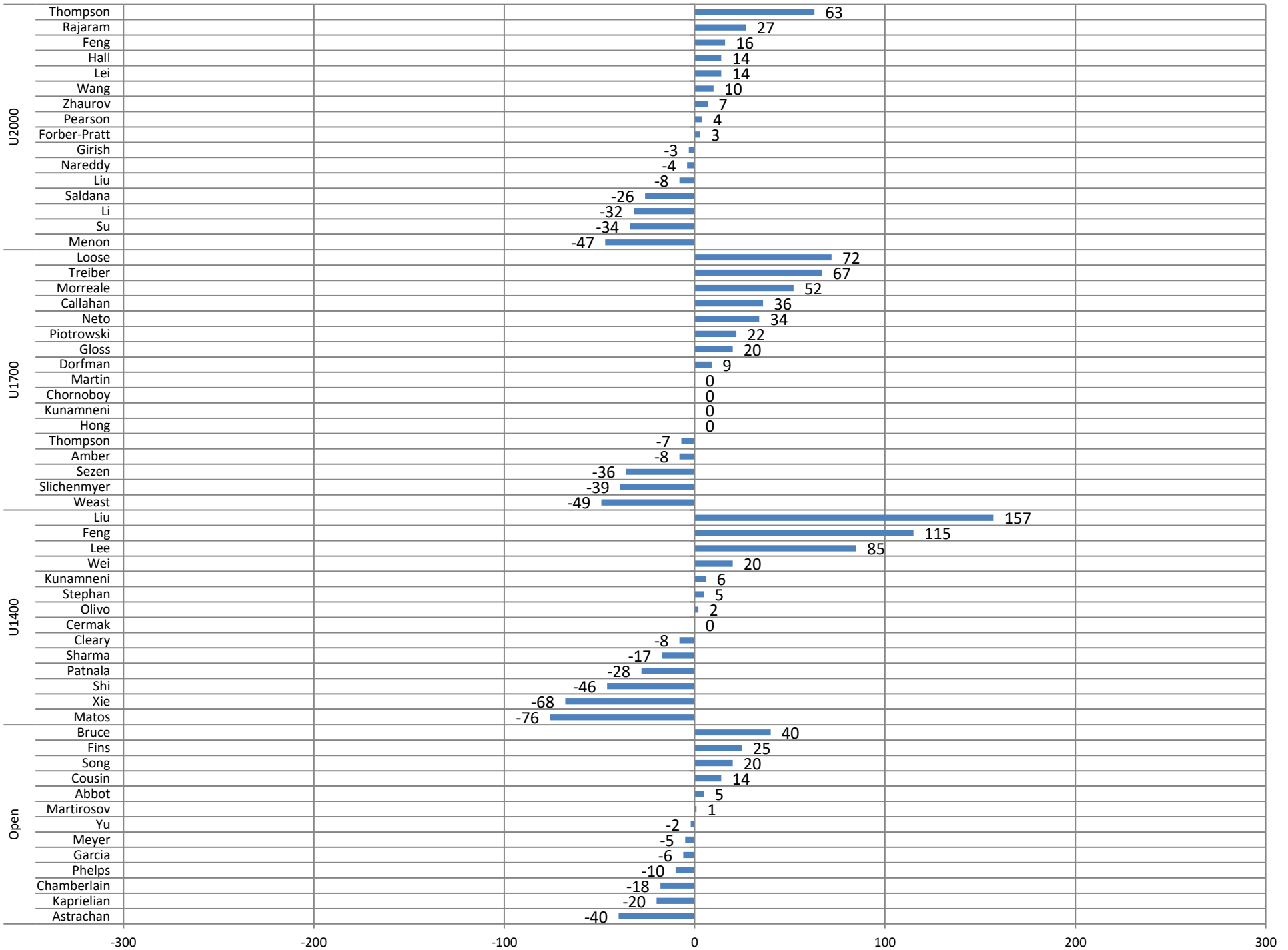
April



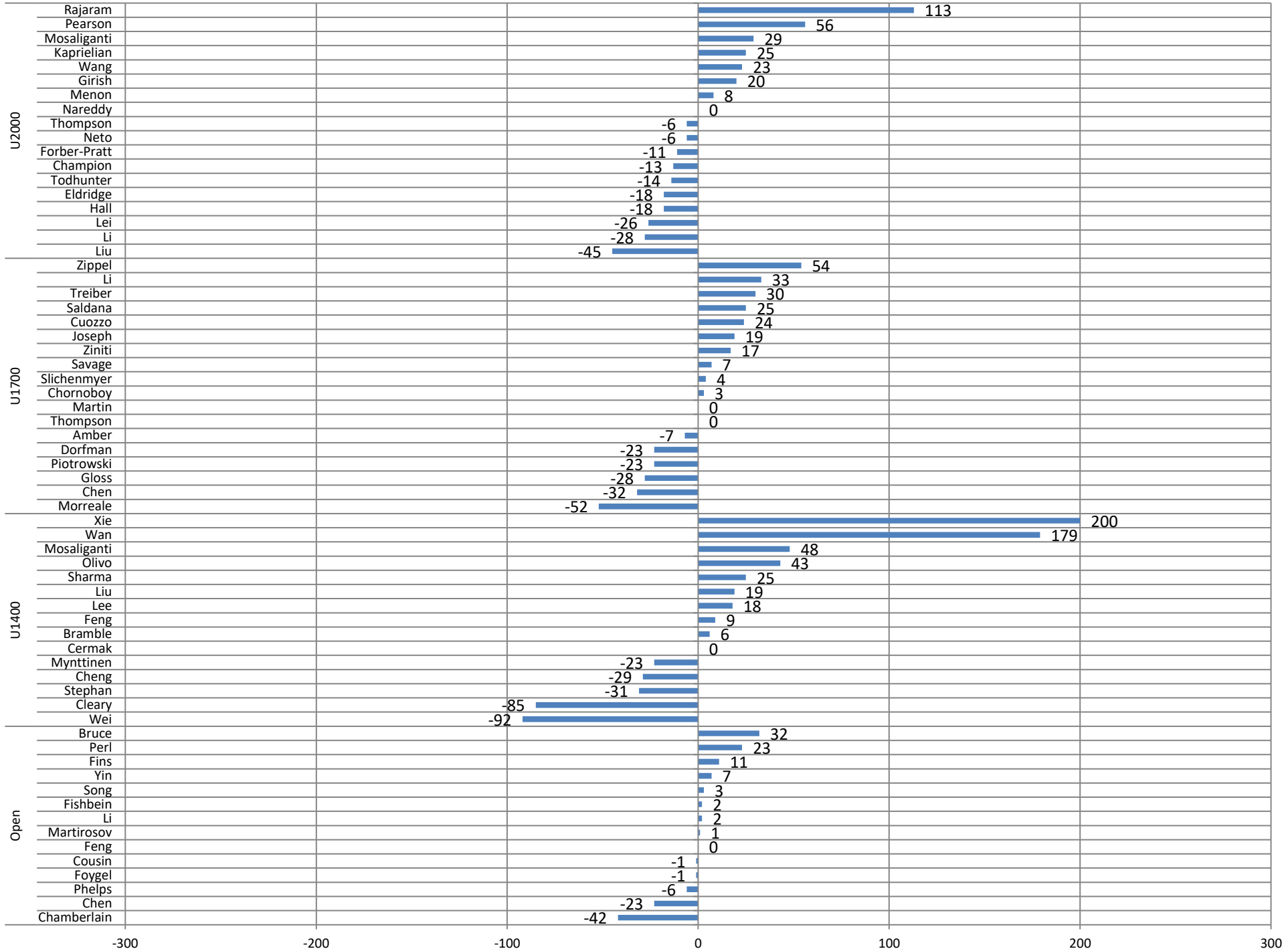
May



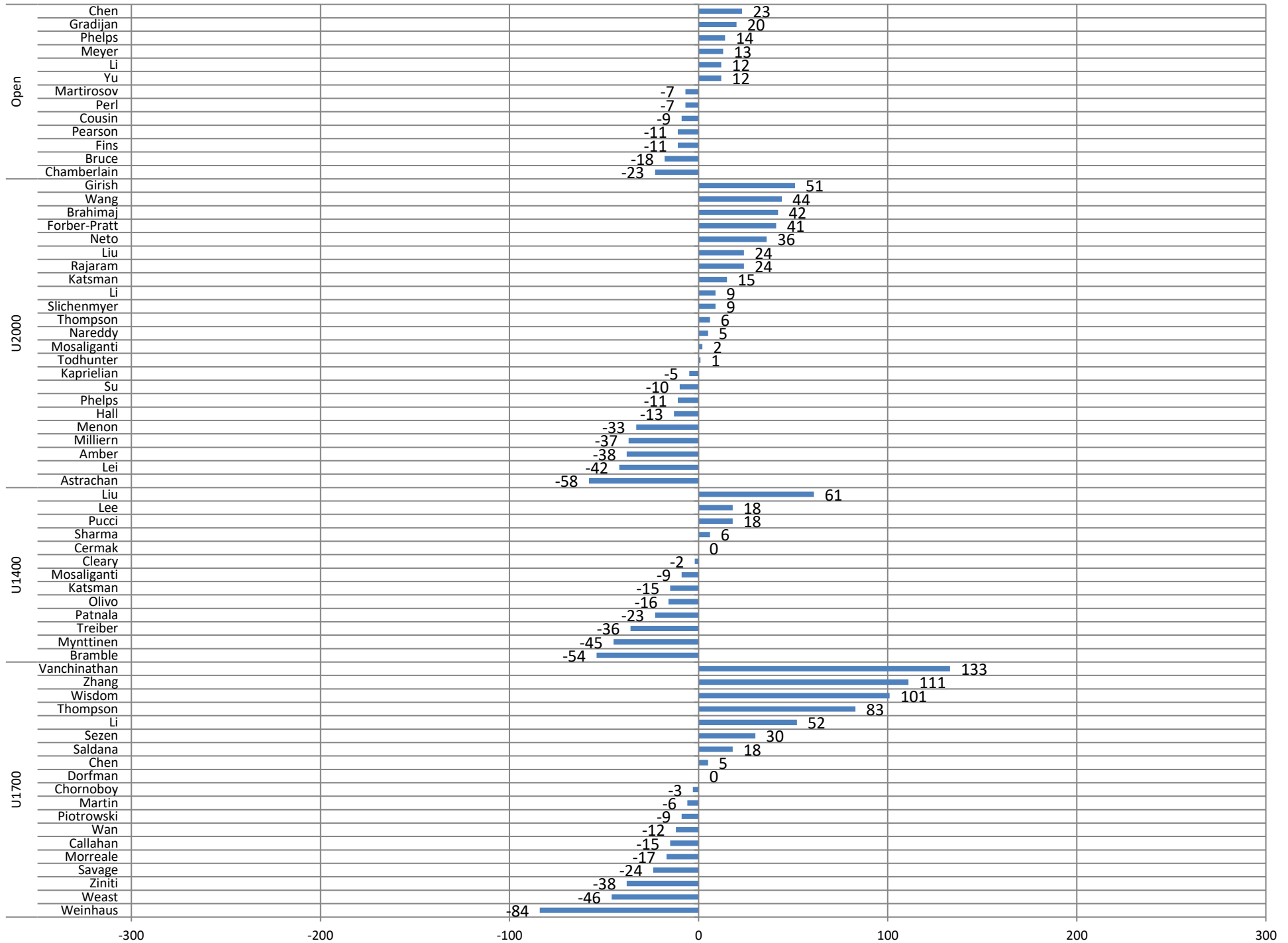
June



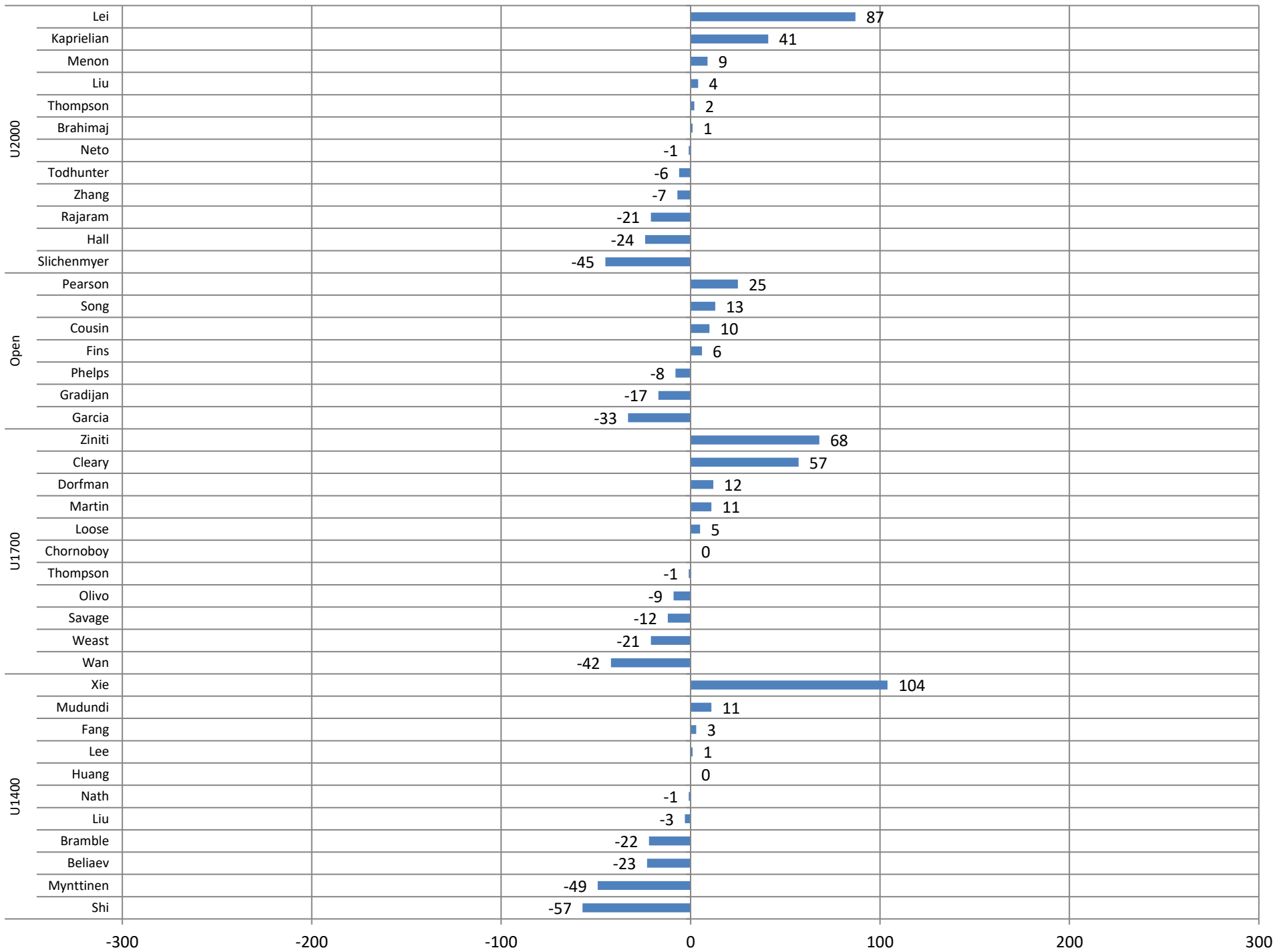
July



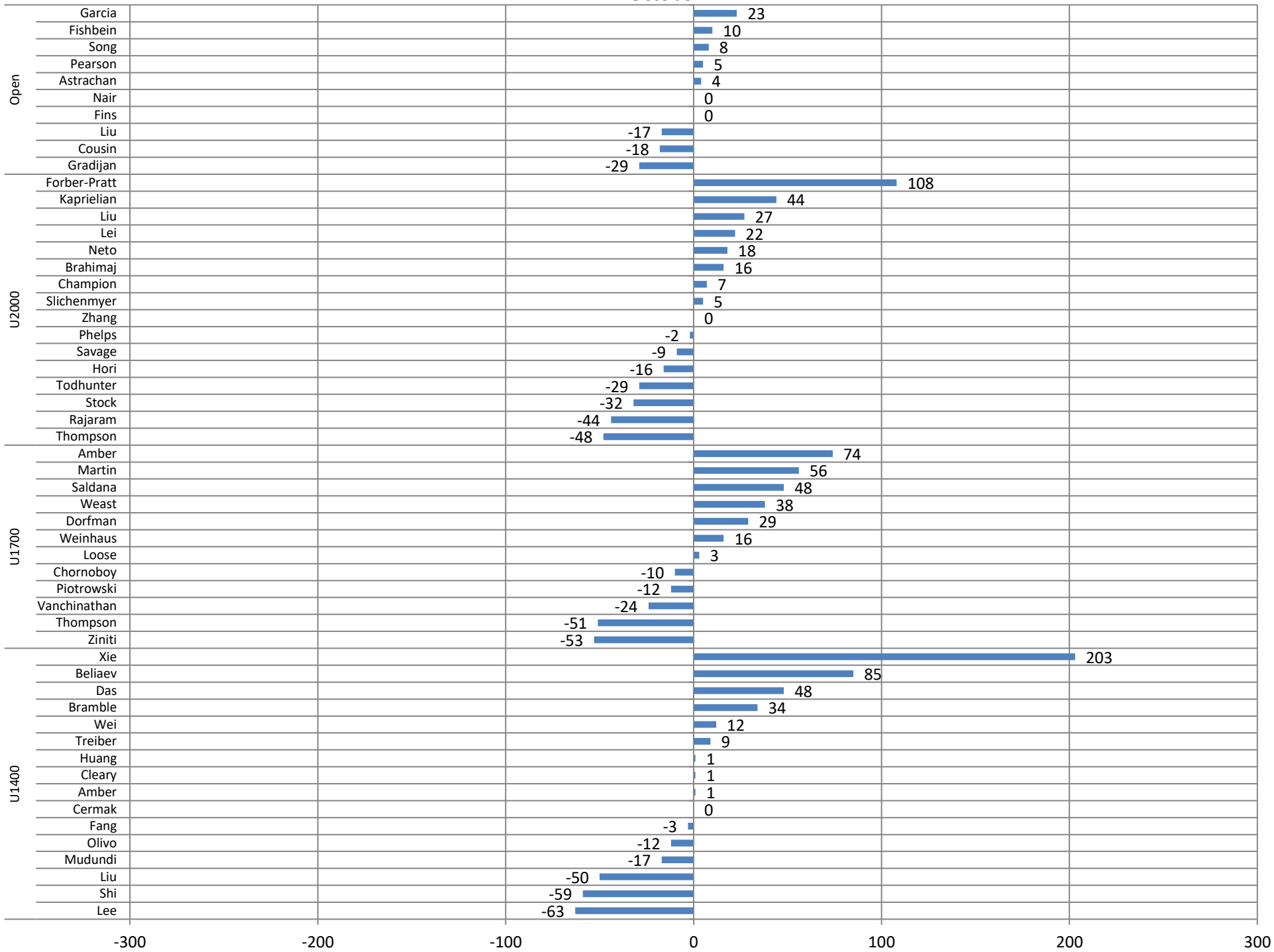
August



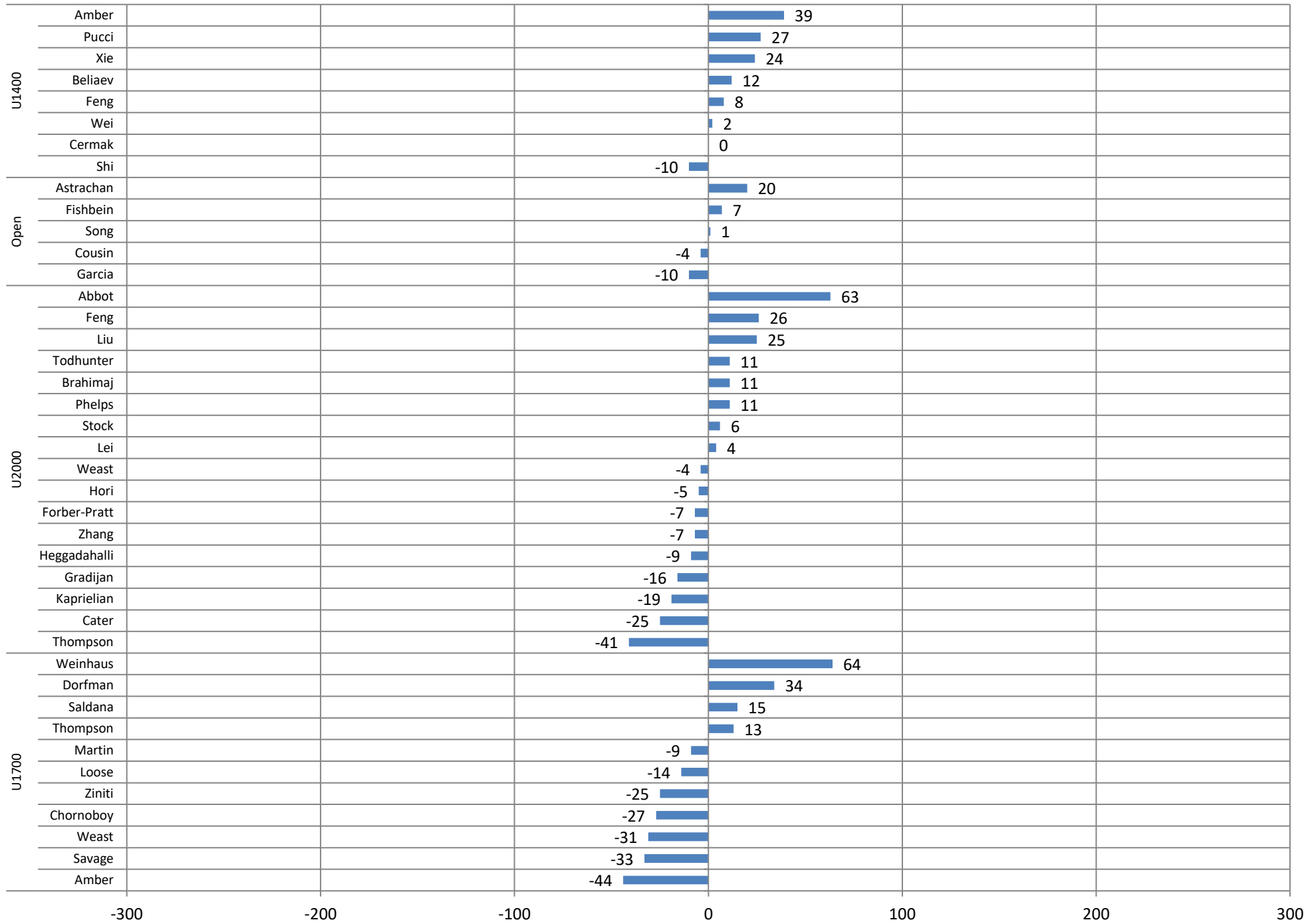
September



October



November



December

